

HIMMEL™

INTERIOR SYSTEMS



Photographer: Nicole England

ALUMINIUM SYSTEMS

VERSION 1

1300 374 253 | WWW.HIMMEL.COM.AU





Contents

Himmel Aluminium	6
Finishing Options	7
Compliance	8
Glass Options	8
Sustainability	9
Warranty	9
Technical Services & Specifications	9
Care & Maintenance	10
Partition A Series 104	12
Partition A Series 132	22
Partition C Series 45	28
Partition DS Series 45	34
Door Kits	41
SOHO Decorative Glazing	42
Skirting and Flat Bar	44
Geometrics	45
Door Hardware	48
Other Accessories	53
MDF Doors	55



Troldtekt®
Natural acoustic solutions

martini

Ecophon
SAINT-GOBAIN
A SOUND EFFECT ON PEOPLE

HIMMEL
INTERIOR SYSTEMS

OWA

CSR Himmel Interior Systems is the leading Australian brand in aesthetic and acoustic interior solutions for Australian Commercial Buildings.

CSR Himmel Interior Systems was established in 2017 with the bringing together of Ceilctor Ceiling Solutions and Alsupply Aluminium & Hardware as one business to offer the Australian Commercial Building market a complete interior systems solution.

We aim to deliver smart spaces through our global product portfolio of ceilings, walls, high performance acoustic, aluminium, and architectural hardware products, leading the way in aesthetic and acoustic solutions for commercial building spaces.

Himmel Aluminium

ALUMINIUM PARTITIONING SUITE

Designed by Himmel Interior Systems in Australia, our aluminium partitioning suite incorporates a host of proven innovative concepts to assist both design and installation. Aluminium is a proven construction material for buildings, vehicles, appliances, and products, both as a framing and cladding material. In the building industry, it is by far the most common material used for window and door joinery, curtain walls and shop fronts. Its selection is

based on many criteria – one being its ease of fabrication to provide visual appeal and easy maintenance.

Today's design trends along with the new world we live in brings the need to evolve existing larger open plan spaces efficiently into smaller offices allowing individuals or teams to have their own space to feel safe in. Our innovative range of systems support, inspire and enable people to collaborate, share knowledge, learn together, build, and produce innovation and success.

BENEFITS OF HIMMEL ALUMINIUM

A unique combination of properties puts aluminium and its alloys among our most versatile engineering and construction materials.



Compliant

Independently assessed as conforming to BP1.3.



Lightweight and Strong

Himmel's aluminium's high strength to weight ratio makes it useful as a partitioning structural material weighing up to 65% less than steel while also making it easier to install.



Corrosion resistant and Long Lasting

Aluminium naturally generates a protective oxide coating that resists corrosion, and Himmel's different coating processes and technology improves the longevity of an office fit-out. Added to this a range of modern powder coated and anodized finishes that provide a premium look to an office fit-out.



Workability

Himmel extruded aluminium is flexible and versatile, innovative in design to create a variety of partition suites and finishing products to meet the needs of any office fit-out.

The knowledge that Himmel partition suites click well together and work off small tolerances provides an improved finish and less downtime for the installer.



Recyclable

As part of Himmel and CSR's quest for sustainability leadership in the construction space, Himmel aluminium can be recycled consistently without loss of quality. This is due to our relentless focus on sustainability as at CSR we know it's a need to have, not a nice to have.



Non Toxic and Safe

Himmel aluminium is safe and non toxic to both installers and those engaging within the interior office environment.

Finishing Options

ANODISING

The Anodising Process

Aluminium has the natural ability to produce a protective oxide film on exposure to atmosphere. This natural oxide is hard and resistant to both water and normal atmospheric conditions, but the protection it offers is inadequate if other agents are present to start a corrosive attack on the aluminium. For this reason, processes were sought whereby the natural oxide film could be reinforced by clear anodising to form a coating which is hard, could be coloured and was even more resistant to wear and corrosion, especially in aggressive coastal and industrial environments.

Anodising is an electrochemical process whereby the aluminium surface is converted to a hard transparent film of oxide which is an integral part of the aluminium. The anodising process takes place in a diluted solution of sulphuric acid in which the aluminium forms the positive pole (the anode), and the electrode - the negative pole (the cathode) of the cell.

A current is passed through the cell and oxide is formed in the pores of the aluminium surface. The anodised aluminium can now be coloured or left as clear anodised.

Anodising and Colouring Process

The process starts with a clean and rinse to remove cutting fluids etc from the substrate. An etch follows which is used to remove the naturally formed oxide layer and to give the metal an even matt appearance over the whole surface area. The metal is then rinsed.

Continuing the process, the metal is placed in cold water to neutralize any residue from the etch. The metal is then rinsed again. The anodising process then takes place which is followed by a final rinse. The colouring process is next. This is achieved by using an electrochemical process to deposit nickel or tin into the open pores created by the anodising process. The pores are then sealed to ensure no airborne contaminants can enter which could cause premature attack of the newly formed oxide layer. The colour is retained and the metal is then rinsed.

Powdercoating

Pre-treatment

In order to obtain good paint adhesion, the aluminium extrusions must first be pre-treated. The eight stages are firstly, a detergent cleaner to remove oil and smut. This is followed by a rinse then an acid etch. After the etch, the aluminium is dipped into two consecutive rinse tanks to flush impurities from the aluminium substrate then immersed in a chromate conversion tank prior to a final rinse. The extrusions are then placed into a drying oven. The chromate conversion layer applied to the substrate becomes an integral part of the aluminium and forms a corrosion resistant layer for the powder to adhere to.

Spraying Methods

The main principle of painting is the charging of powder particles.

The powder particles are charged when forced down a Teflon tube which is wrapped around the barrel of the spray gun. By rubbing against this tube the particles of powder gain a positive charge. Once the charged particles exit the spray gun, they are attracted to the earthed aluminium extrusions and the powder wraps around the extrusion to give an even, uniform finish. After spraying, the extrusions are cured at specified temperatures and times in order for the coating to flow out and cure.

Himmel's Range

Himmel Interior Systems range aluminium in:

Clear
Anodised



Dulux Black
NightSky



Dulux
Pearl White



We have the flexibility to work with you on your specific project requirements when it comes to colour. Using the extensive range of Dulux Duralloy® powder coat colours, you are guaranteed to find the perfect match for your next project*.

*MOQs apply.

Glass Options

GLASS INFORMATION

For more information on all glass types consult with preferred glazier or the Australian Glazing Associations.

Glass Thickness

Typical to all Himmel Aluminium Systems the glass thickness ranges the suites can accommodate is 6mm – 12.78mm maximum for laminated glass. For more information on glass thickness and compliance with the Australia Building Code requirements, refer to the “Human Impact Safety Requirements”.

Glass Weight

Generally, 2mm Glass thickness per m² = 5kg, ie 6mm glass = 15kg/m²

8mm	20kg	M2
10mm	25kg	M2
12mm	30kg	M2

GLASS TO METAL CONTACT

Glass should be installed without glass-to-metal contact, as thermal movement created by the different coefficients of expansion between glass and metal can cause breakage, particularly in annealed and laminated glass. Himmel Aluminium Systems provide for backing seals (ACE Captive Wedge) or glazing tapes. Where present these gaskets should be pre-installed as while some systems can be double wedged, this is a more costly glazing procedure, and not normally recommended by gasket and wedge suppliers or glass companies.

ACOUSTIC PERFORMANCE OF GLASS

The table below outlines calculated Rw and Rw+Ctr performance values to support the acoustic design of your glass partitions. If your project requires a higher level of acoustic performance, we recommend contacting your preferred glazier or an acoustic engineer.

System	Laminated Glass (1)	Laminated Glass (2)	Glass Type	Air Gap	Rw	Ctr	Rw+CTR
Single glass	12.76		Generic PVB	Nil	38	-3	35
AS104	10.38	10.38	PVB 0.38mm	47.5	48	-8	40
AS104	12.38	12.38	PVB 0.38mm	47.4	49	-6	43
AS132	12.38	10.38	PVB 0.38mm	76.7	51	-6	45
AS132	12.38	12.38	PVB 0.38mm	76.7	51	-5	46
AS132	12.76	12.76	PVB 0.76mm	76.7	52	-6	46

Marshall Day Acoustics 2015 Predictor Key No. 3648

Compliance

Himmel aluminium is manufactured to the highest standards, supplied in accordance with Australian Standard AS1866 aluminium and aluminium alloys. All Anodized and painted extrusions to AS1231.

Himmel aluminium systems have been independently assessed as compliant with NCC 2019 Vol 1 Amendment 1 BP1.3 “Glass Installations at Risk of Human Impact. The assessment has confirmed the performance of Himmel Aluminium Systems using laminated glass and the Himmel proprietary gasket systems.

STRUCTURAL ASSESSMENT

When installing any aluminium partition systems, we strongly recommend working with a structural engineer for the design and certification of lateral restraint of the top of partition walls. The NCC requires that all partition systems can resist all imposed loadings.

You can expect your structural engineer to determine if your partitioning and wall system requires any seismic bracing. Seismic loading to AS1170.4 and Internal Wind Pressure loading to AS1170.2 results in the top of all partition suites requiring lateral restraint to resist all imposed forces. Suspended ceilings alone cannot provide sufficient lateral restraint, meaning structural bracing from the top or partition suites to the structural elements over is required for all Class 2-9 buildings.

Sustainability

Himmel Aluminium participates in the Living Building Challenge Declare program. You can make the right aluminium product decisions when designing and specifying for your projects by selecting aluminium products that have Declare material documentation available.

Declare Labels provide a clear and informative “nutrition label” for building products by answering three simple questions:

Where does a product come from?

What is it made of?

And where does it go at the end of its life?

Declare aligns with our commitment to transparency in support of the Living Building Challenge’s Red List and Appropriate Sourcing Products in our Aluminium range.

Declare.

Aluminium can be recycled indefinitely due to its high intrinsic value. Aluminium is also the most cost-effective metal or material to be recycled. Aluminium has been recycled since it was first commercially produced and today recycled aluminium accounts for one-third of global consumption worldwide.

Recycling is an essential part of the aluminium industry and makes good sense economically, technically and ecologically. All aluminium products retain value, even at the end of their useful life, which guarantees that it is possible to continue to create value by recycling them into new products.

Warranty

All aluminium extrusions supplied by Himmel Interior Systems come with a standard 10-year warranty period. At the completion of each project your Himmel Account Manager will issue your specific warranty. Note: Warranty only covers the aluminium products, not the installation. This is the responsibility of the installer.

Technical Services and Specifications

Technical advice is available from our experienced team. Please see our company information page for your local contact – Himmel Contact Us. Our local Account Managers are available to support you on all your aluminium project requirements to ensure a smooth build.

CSR DesignLINK are also available to provide technical support to architects, designers, specifiers, and engineers to support major projects. This service is offered in conjunction with your local Account Manager to ensure you receive the very best local knowledge, combined with DesignLINK’s technical expertise.

Email: designlink@csr.com.au

Call 1800-621-117.

To support your project visit our website to download a copy of the Himmel Interior Systems Aluminium Specification Manual. www.himmel.com.au Our website also features CAD details on either individual components or fully assembled details for convenient transfer to specifier’s drawings. The file formats available for download are .DWG, .DXF, .PDF and Autodesk Revit .RVT

Specifications are also available online with Natspec branded section 0520 HIMMEL ALUMINIUM SYSTEMS www.natspec.com.au

HANDLING, STORING AND MAINTENANCE

Aluminium is one of the easiest materials to keep in good condition. It has a high natural resistance to corrosive conditions normally encountered during shipment and storage. The principal things to guard against are surface abrasions or water stains. Suppliers make every effort to pack aluminium so 'traffic marks' or 'rub marks' don't occur during shipment and that it remains dry. All incoming shipments should be inspected promptly, since suppliers generally have a time limit in which damage claims will be honoured.

Traffic marks may appear as scratches, surface abrasions, or a condition resembling cinders embedded in the metal. They result from mechanical abrasion and subsequent oxidation. Their disadvantage lies in unsightliness and their effect on finishing operations. Water stain is a superficial condition and the mechanical properties of the metal having such a stain are not affected. If a shipment of aluminium arrives in a wet condition, it should be thoroughly dried before storing. This may be done by evaporation in air or by means of dry air currents. When the moisture is removed in this manner within a short period, no stain will result. Once safely dry, the metal should not be stored near obvious water sources as steam or pipes and should be kept at a reasonable distance from open doors and windows.

CLEANING

Aluminium has a natural beauty and lustre of its own, yet its surface can be treated in various ways to protect and enhance appearance, which can be maintained with regular, low maintenance attention. The surface of fabricated aluminium, whether untreated, anodised or coated, can be spoiled by improper care. Usual care is no more than periodic cleaning, similar to window glass. Anodising treatment will substantially enhance appearance, render the surface more resistant to various forms of attack and facilitate cleaning and maintenance. Grime which causes deterioration cannot be prevented from settling on exposed surfaces. If cleaned reasonably frequently then the mildest methods of washing will produce satisfactory results. There are many ways to clean aluminium, from water to harsh abrasives. The type of cleaning that should be used is governed by the finish, degree of soiling, and the size, shape and location of the surface to be cleaned. The mildest method possible should be used, particularly for aluminium which has been anodised.

With anodised aluminium, surface deterioration occurs as a result of grime deposition and moisture attack. In coastal environments it is caused by airborne chlorides, in industrial or urban environments by sulphur compounds.

Grime deposits absorb contaminated moisture like a sponge, assisting attack on the film, which cannot be restored without removal. In rural areas, cleaning may be needed every six months. In industrial and marine environments, cleaning is recommended at least every three months, preferably monthly.

The following cleaning materials and procedures are listed in order of mild to harsh. The mildest treatment should be tried on a small area and if not satisfactory only then should the next be examined.

1. Plain water
2. Water with mild soap or detergent
3. Solvents, e.g. kerosene, turpentine, white spirit
4. Non-etching chemical cleaner
5. Wax-base polish
6. Abrasives + Abrasive wax.

After applying the cleaning agents, the surface should be washed down thoroughly and dried with a clean cloth to prevent streaking. There should be no concentration of the cleaner at the bottom edges of the aluminium. If using proprietary cleaners, the manufacturer's recommendation should be obtained and followed carefully.

If abrasives are used, the aluminium finish may be altered. If there is a grain in the finish, then cleaning should be performed with the grain. If the condition of the surface indicates the use of abrasive or etching materials, consult a cleaning specialist. If all other methods fail it may be necessary to resort to heavy-duty cleaning. This involves the use of cleaners containing strong etching chemicals or coarse abrasives.

To keep your Aluminium looking it's best we recommend using our Aluminium Cleaning Block. Code: 155053





Partition A Series 104

A Series 104 provides a central line glazing with numerous configurations and design options offering a complete partition system for plasterboard and glazing.

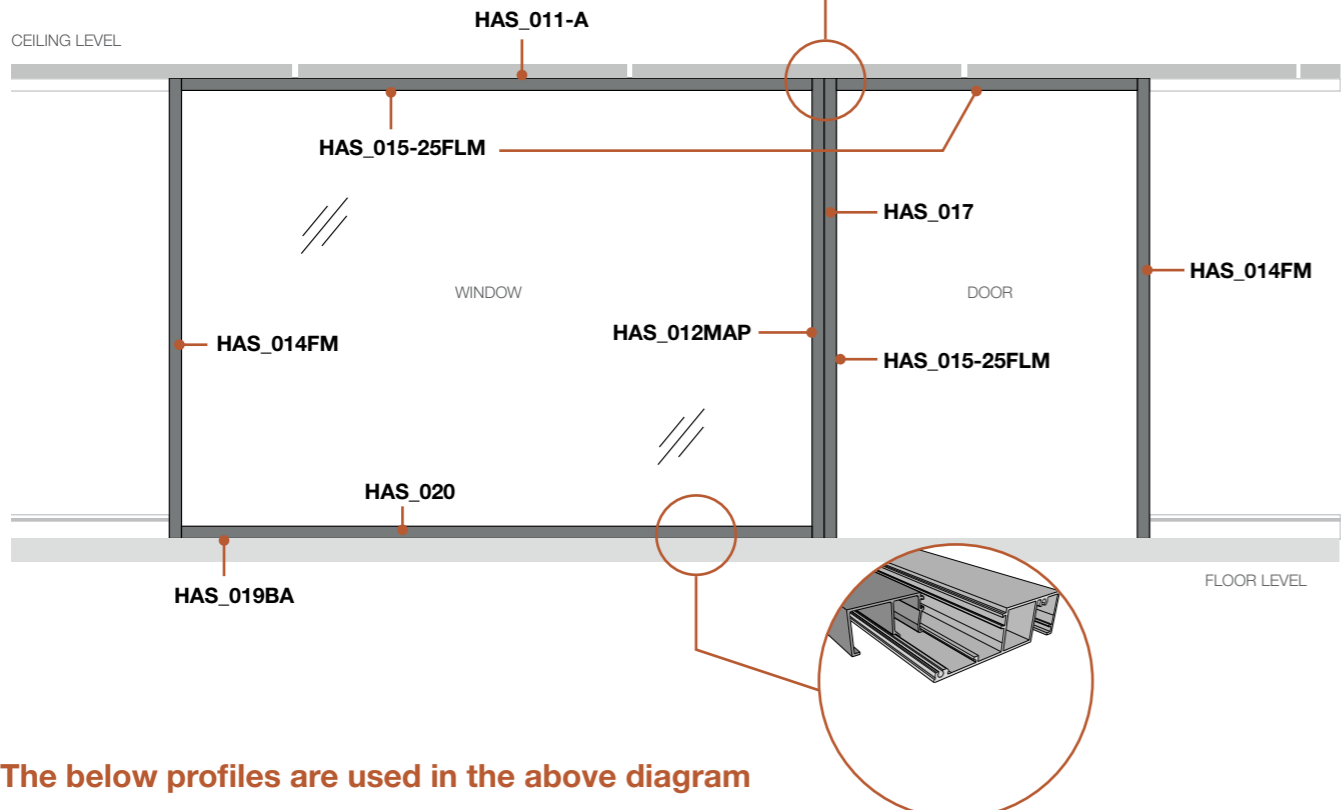
A Series 104 has the following features:

- 25mm / 35mm / 50mm reveal options
- Pocket depth inside 18mm
- Available length - 2800mm / 3600mm
- Centre glazing option only
- Standard wall size based on 64mm steel stud with one layer of 13mm Gyprock plaster board on each side
- Can accommodate glass thicknesses between 6mm and 13mm
- Door thicknesses between 35mm - 45mm can be used
- Shadowline details optional
- Can be used with CS45 and DS45 series

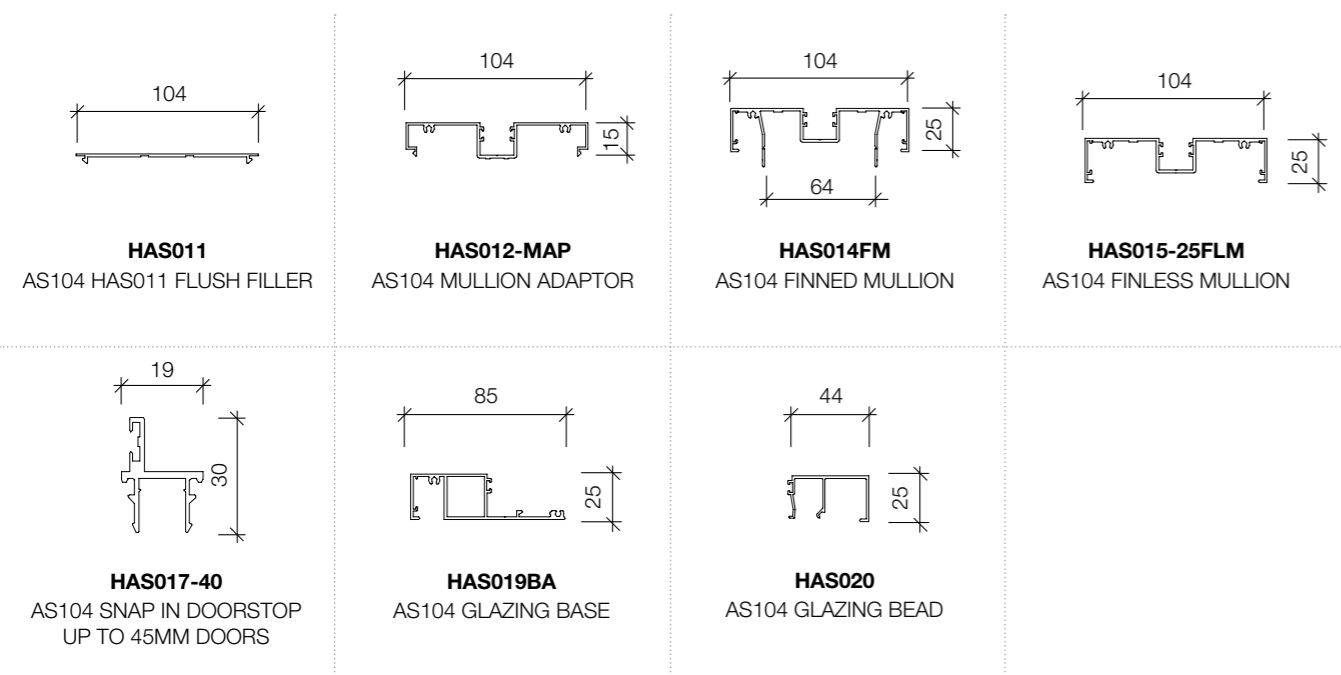
Typical Partition Elevations

Many partition systems have various ways to combine all components that can support catering to your individual project. We have featured the four most popular combinations to give you a great starting point. Our Account Managers are here to support you and ensure your project needs are catered for.

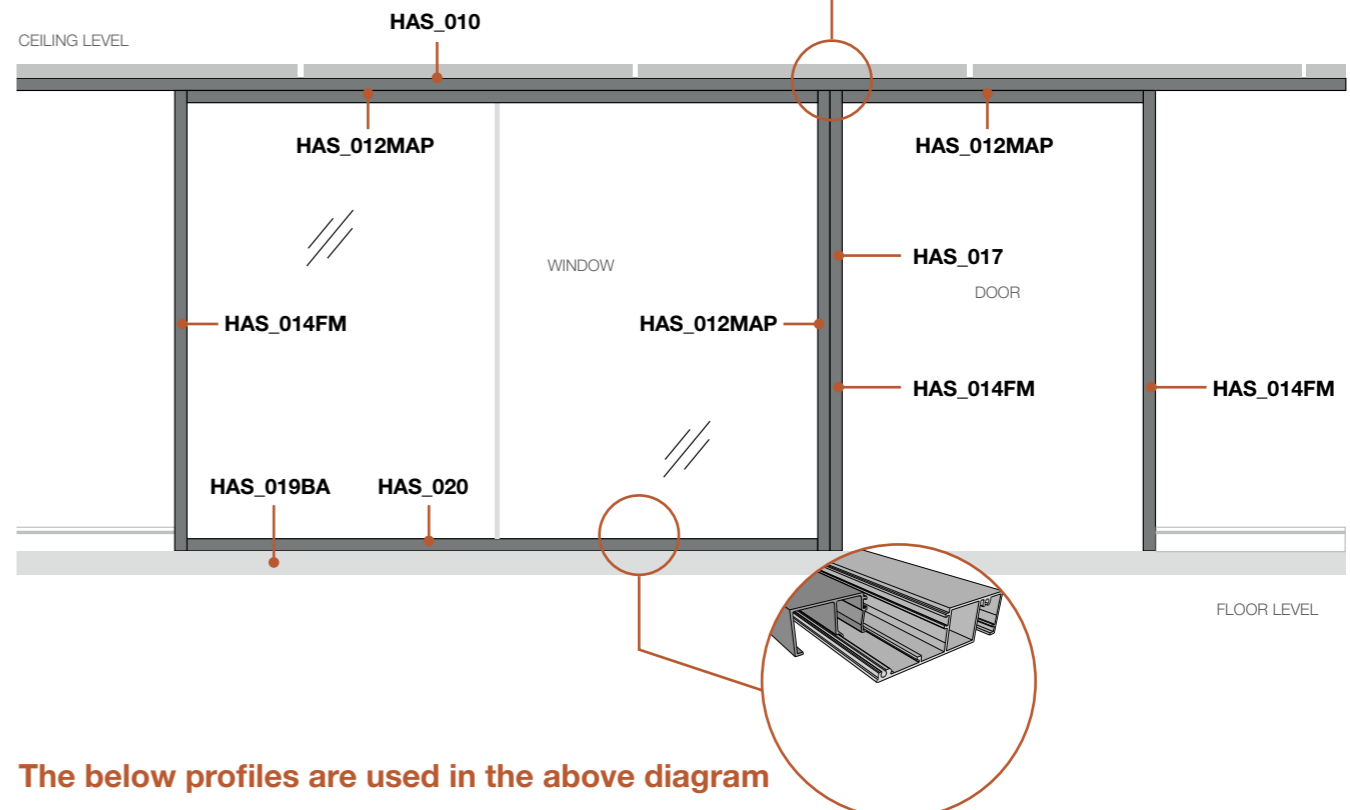
Wall Detail - Option 1



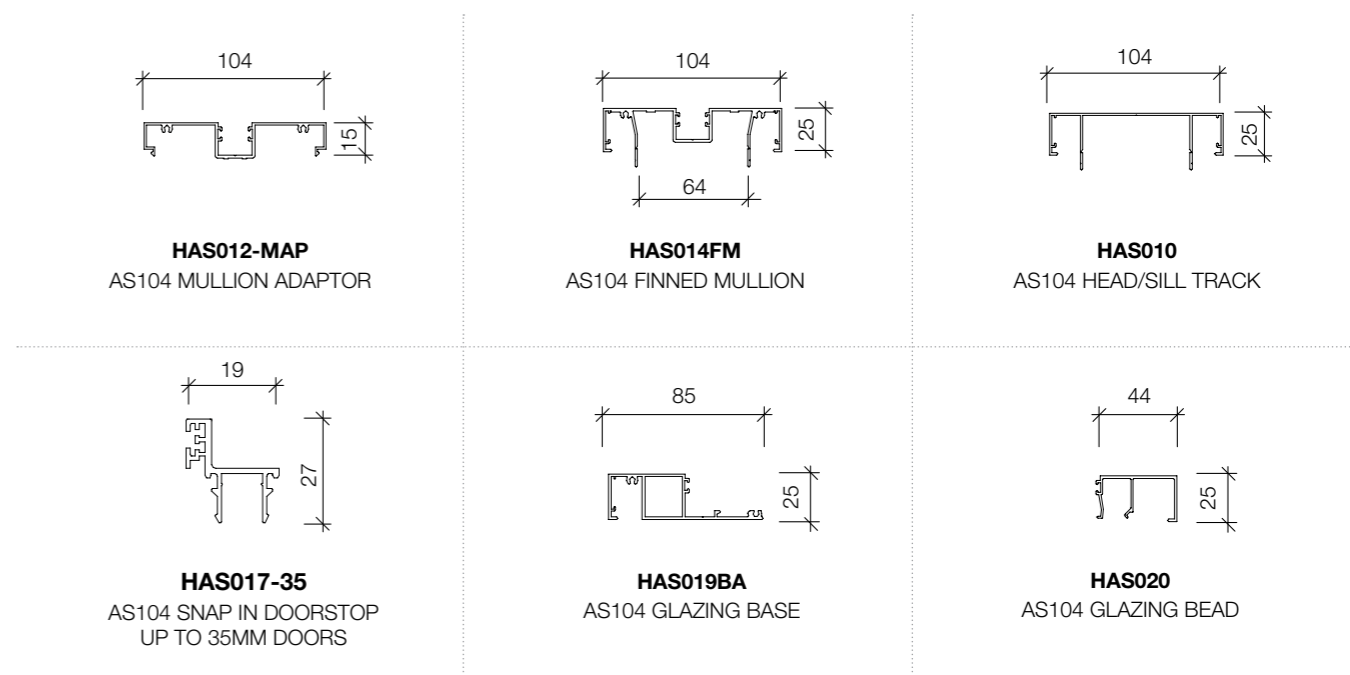
The below profiles are used in the above diagram



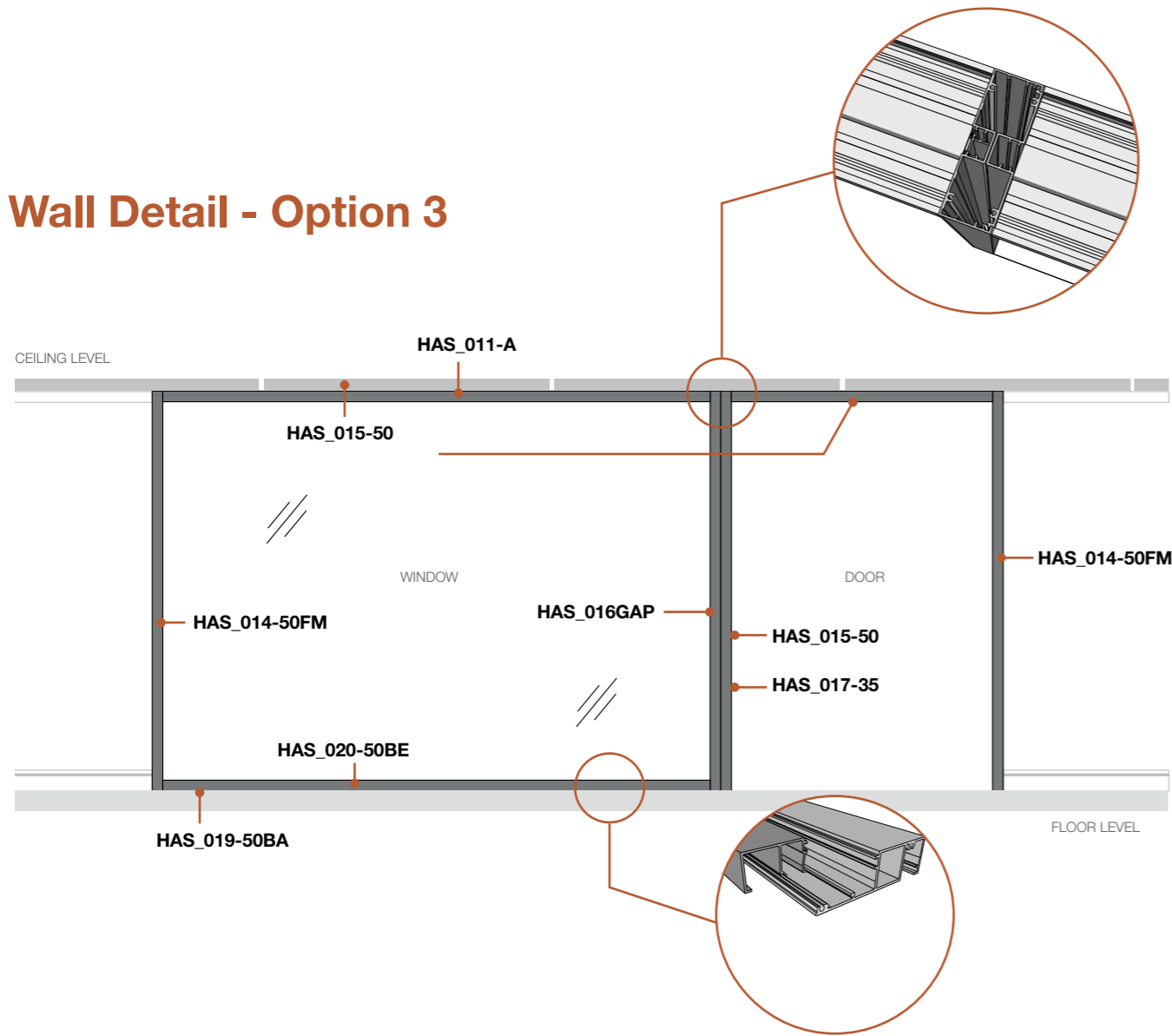
Wall Detail - Option 2



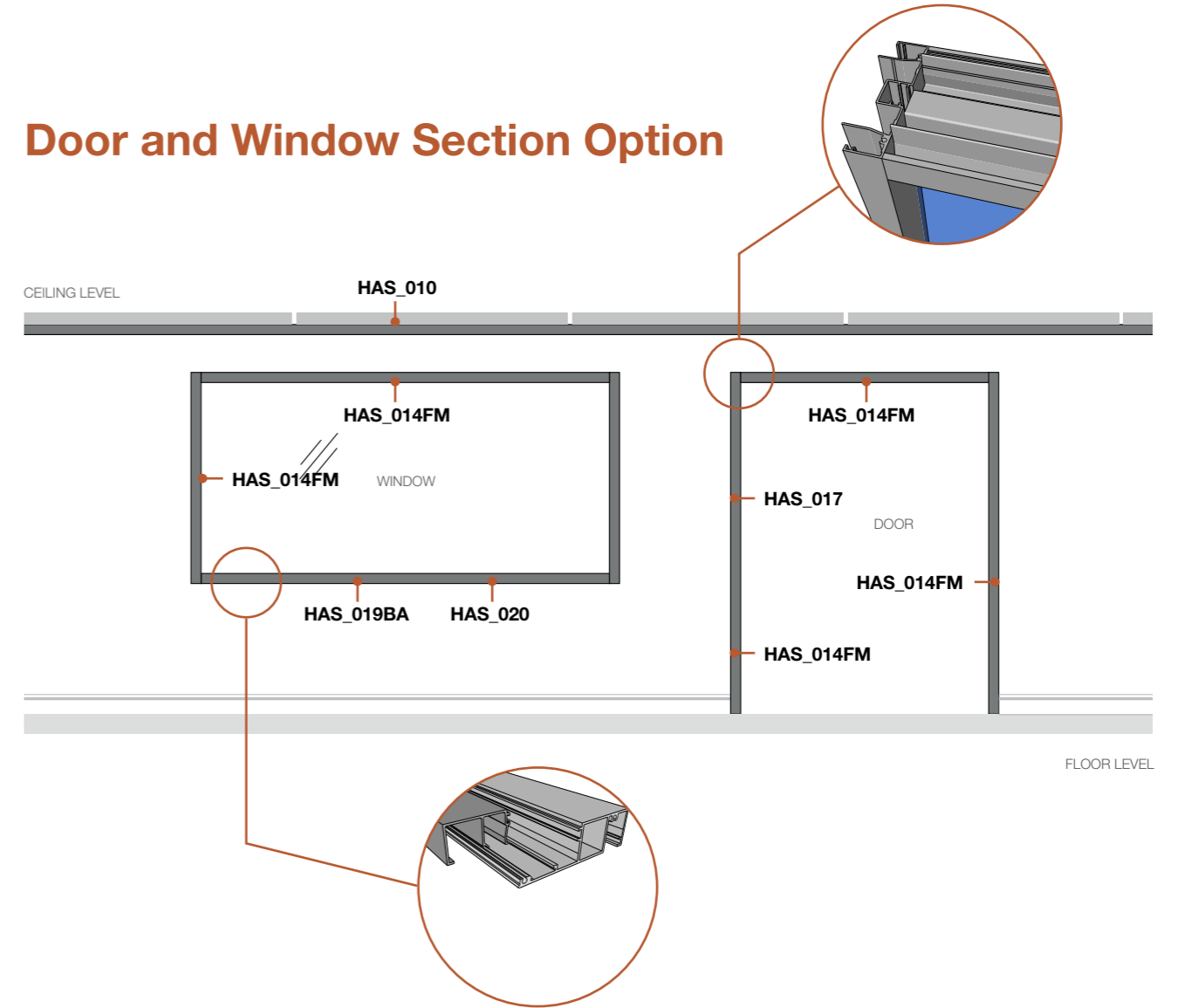
The below profiles are used in the above diagram



Wall Detail - Option 3

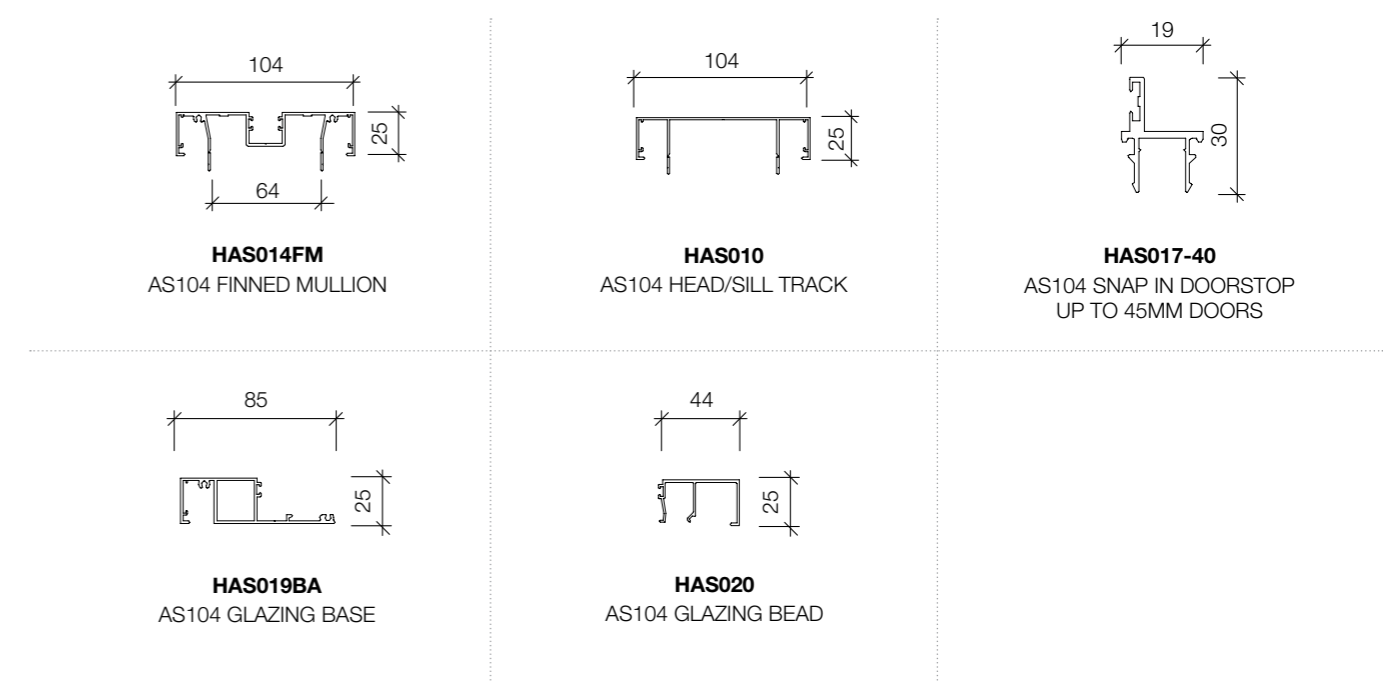
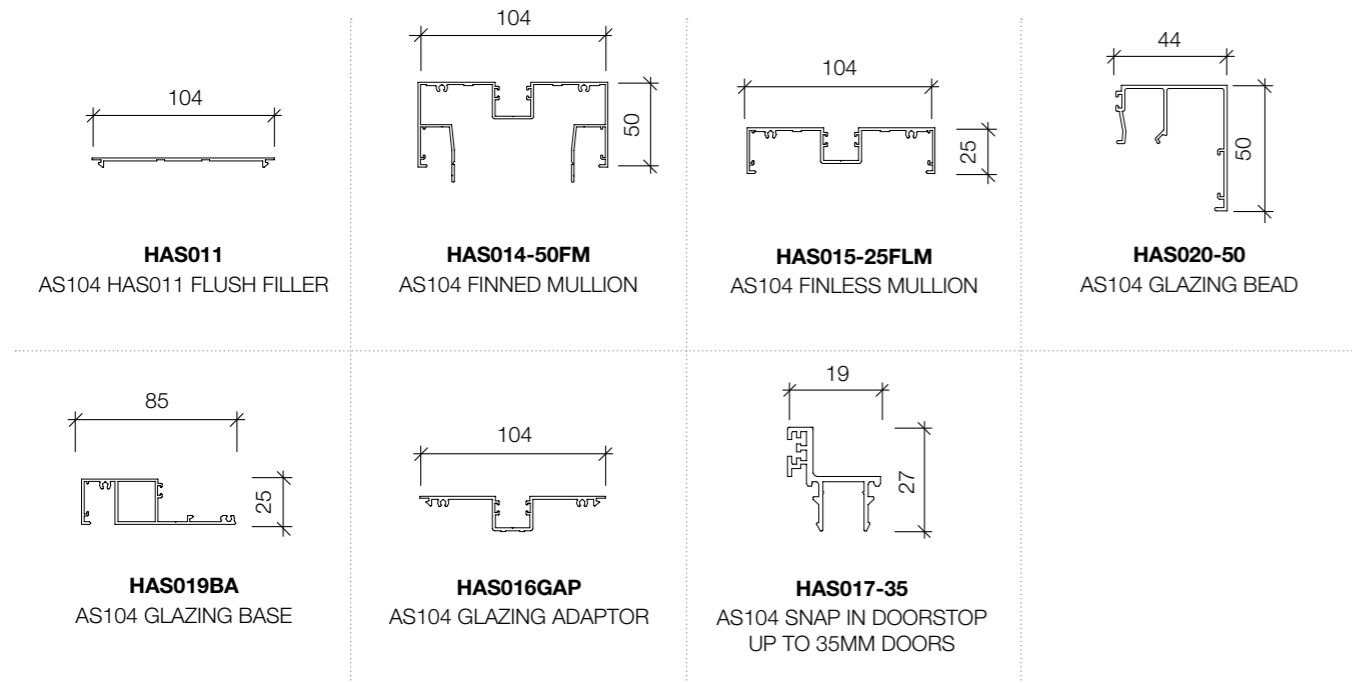


Door and Window Section Option

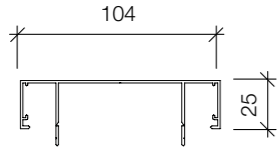


The below profiles are used in the above diagram

The below profiles are used in the above diagram

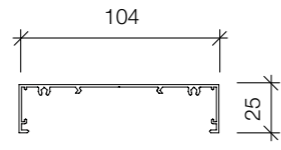


Suite Profiles



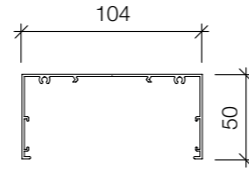
HAS010
AS104 HEAD/SILL TRACK
2.8M C/A: 103278
3.6M C/A: 181680
2.8M BLK: 160222
3.6M BLK: 181682

Available in: NSW, QLD, VIC/TAS, SA/NT, WA



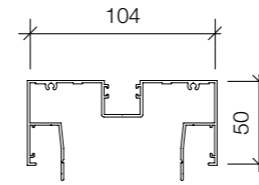
HAS010-A
AS104 HEAD TRACK
2.8M C/A: 197613
3.6M C/A: 197633
2.8M BLK: 197632
3.6M BLK: 197635

Available in: NSW, QLD, VIC/TAS, SA/NT, WA



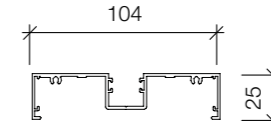
HAS010-A-50
AS104 HAS010-A-50 COC TRANSOM
2.8M C/A: 181632
3.6M C/A: 181685
2.8M BLK: 181634
3.6M BLK: 181687

Available in: NSW, QLD, VIC/TAS, SA/NT, WA



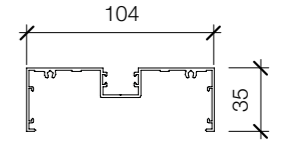
HAS014-50FM
AS104 FINNED MULLION
2.8M C/A: 455353
3.6M C/A: 455356
2.8M BLK: 455355
3.6M BLK: 455358

Available in: NSW, VIC/TAS, WA



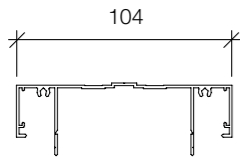
HAS015-25FLM
AS104 FINLESS MULLION
2.8M C/A: 155062
3.6M C/A: 162583
2.8M BLK: 160223
3.6M BLK: 181690

Available in: NSW, SA/NT



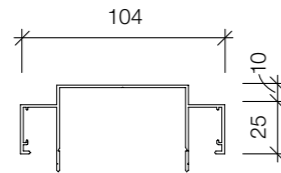
HAS015-35FLM
AS104 FINLESS MULLION
2.8M C/A: 197652
3.6M C/A: 197655
2.8M BLK: 197654
3.6M BLK: 197657

Available in: NSW, VIC/TAS, SA/NT, WA



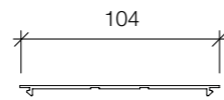
HAS010-R
AS104 REBATED HEAD TRACK
2.8M C/A: 453242
3.6M C/A: 453247
2.8M BLK: 453246
3.6M BLK: 453249

Available in: NSW, QLD, VIC/TAS, SA/NT, WA



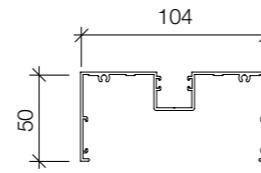
HAS010-SH
AS104 SHADOWLINE HEADTRACK
2.8M C/A: 155064
3.6M C/A: 181695
2.8M BLK: 182828
3.6M BLK: 181697

Available in: NSW, QLD, VIC/TAS, SA/NT, WA



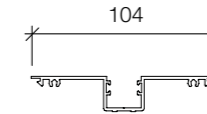
HAS011
AS104 HAS011 FLUSH FILLER
2.8M C/A: 155059
3.6M C/A: 181591
2.8M BLK: 160226
3.6M BLK: 181593

Available in: NSW, QLD, VIC/TAS, SA/NT, WA



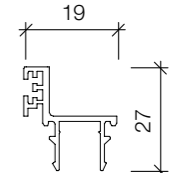
HAS015-50FLM
FINLESS MULLION
2.8M C/A: 155066
3.6M C/A: 181721
2.8M BLK: 160231
3.6M BLK: 170030

Available in: NSW, VIC/TAS, WA



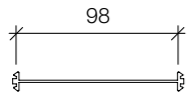
HAS016GAP
AS104 GLAZING ADAPTOR
2.8M C/A: 155060
3.6M C/A: 181609
2.8M BLK: 160233
3.6M BLK: 181611

Available in: NSW, VIC/TAS, SA/NT, WA



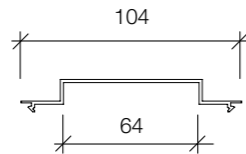
HAS017-35
AS104 SNAP IN DOORSTOP
UP TO 35MM DOORS
2.8M C/A: 155057
3.6M C/A: 169978
2.8M BLK: 160228
3.6M BLK: 180884

Available in: NSW, QLD, VIC/TAS, SA/NT, WA



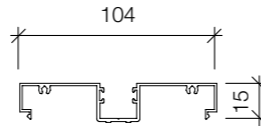
HAS011-JP
AS104 FLAT TERMINATION CAP
2.8M C/A: 181566
3.6M C/A: 181590

Available in: NSW, QLD, VIC/TAS, SA/NT, WA



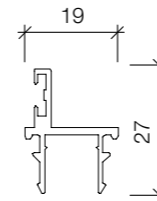
HAS011-SH
AS104 JOINTING PLATE
2.8M C/A: 181570
3.6M C/A: 181596

Available in: NSW, QLD, VIC/TAS, SA/NT, WA



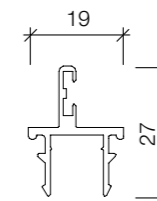
HAS012-MAP
AS104 MULLION ADAPTOR
2.8M C/A: 155061
3.6M C/A: 180886
2.8M BLK: 160225
3.6M BLK: 180882

Available in: NSW, QLD, VIC/TAS, SA/NT, WA



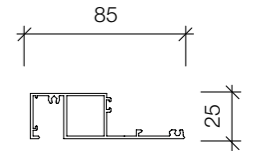
HAS017-40
AS104 SNAP IN DOORSTOP
UP TO 45MM DOORS
2.8M C/A: 181516
3.6M C/A: 181537
2.8M BLK: 181518
3.6M BLK: 181539

Available in: NSW, QLD, VIC/TAS, SA/NT, WA



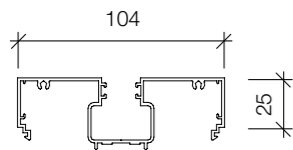
HAS018-45
AS104 SNAP IN DOORSTOP
UP TO 45MM DOORS
2.8M C/A: 155055
3.6M C/A: 181084
2.8M BLK: 160227
3.6M BLK: 181085

Available in: NSW, QLD, VIC/TAS, SA/NT, WA



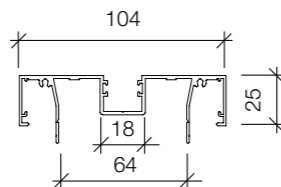
HAS019BA
AS104 GLAZING BASE
2.8M C/A: 155063
3.6M C/A: 162584
2.8M BLK: 160229
3.6M BLK: 180883

Available in: NSW, QLD, WA



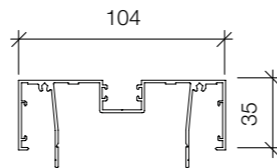
HAS014-A
AS104 DEEP POCKET MULLION
2.8M C/A: 197646
3.6M C/A: 197649
2.8M BLK: 197648
3.6M BLK: 197651

Available in: NSW, QLD, VIC/TAS, SA/NT, WA



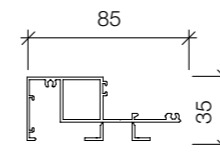
HAS014FM
AS104 FINNED MULLION
2.8M C/A: 155067
3.6M C/A: 169979
2.8M BLK: 160224
3.6M BLK: 181730

Available in: NSW, QLD, VIC/TAS, SA/NT, WA



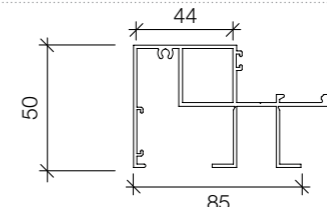
HAS014-35FM
AS104 FINNED MULLION
2.8M C/A: 197640
3.6M C/A: 197643
2.8M BLK: 197642
3.6M BLK: 197645

Available in: NSW, QLD, VIC/TAS, SA/NT, WA



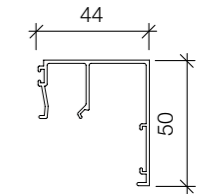
HAS019-35BA
AS104 GLAZING BASE
2.8M C/A: 197658
3.6M C/A: 197661
2.8M BLK: 197660
3.6M BLK: 197663

Available in: NSW, QLD, VIC/TAS, SA/NT, WA



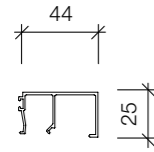
HAS019-50BA
AS104 GLAZING BASE
2.8M C/A: 155065
3.6M C/A: 181717
2.8M BLK: 160232
3.6M BLK: 170031

Available in: NSW, QLD, VIC/TAS, SA/NT, WA



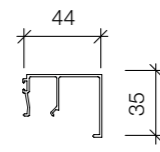
HAS020-50
AS104 GLAZING BEAD
2.8M C/A: 455359
3.6M C/A: 455362
2.8M BLK: 455361
3.6M BLK: 455364

Available in: NSW, QLD, VIC/TAS, SA/NT, WA



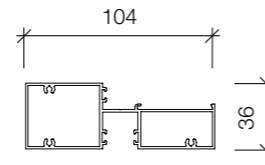
HAS020
AS104 GLAZING BEAD
2.8M C/A: 197664
3.6M C/A: 197667
2.8M BLK: 197666
3.6M BLK: 197669

Available in: NSW, QLD, VIC/TAS, SA/NT, WA



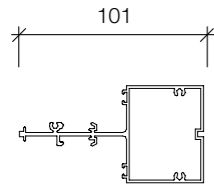
HAS020-35
AS104 GLAZING BEAD
2.8M C/A: 197670
3.6M C/A: 197673
2.8M BLK: 197672
3.6M BLK: 197675

Available in: NSW, VIC/TAS, SA/NT, WA



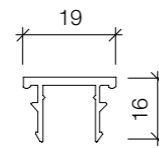
HAS021-A
AS104 GLAZING TRANSOM
2.8M C/A: 453260
3.6M C/A: 453263
2.8M BLK: 453262
3.6M BLK: 453265

Available in: NSW



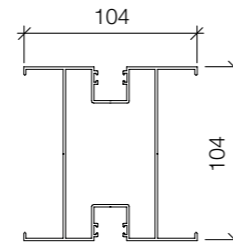
HAS021-B
AS104 GLAZING TRANSOM
2.8M C/A: 197676
3.6M C/A: 197679
2.8M BLK: 197678
3.6M BLK: 197681

Available in: NSW



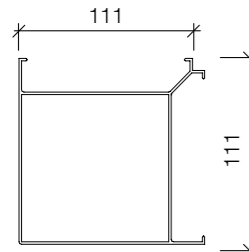
HAS023FP
AS104 FILLER PLATE
2.8M C/A: 155007
3.6M C/A: 181510
2.8M BLK: 181502
3.6M BLK: 181512

Available in: NSW, VIC/TAS, SA/NT, WA



HAS024-CP
AS104 CORNER POST
2.8M C/A: 155070
3.6M C/A: 181749
2.8M BLK: 160234
3.6M BLK: 181751

Available in: NSW



HAS024-FCP
AS104 FLUSH CORNER POST
2.8M C/A: 197682
3.6M C/A: 197685
2.8M BLK: 197684
3.6M BLK: 197687

Available in: NSW





Partition A Series 132

A Series 132 provides a central line glazing with numerous configurations and design options, offering a complete partition system for Gyprock plasterboard and glazing.

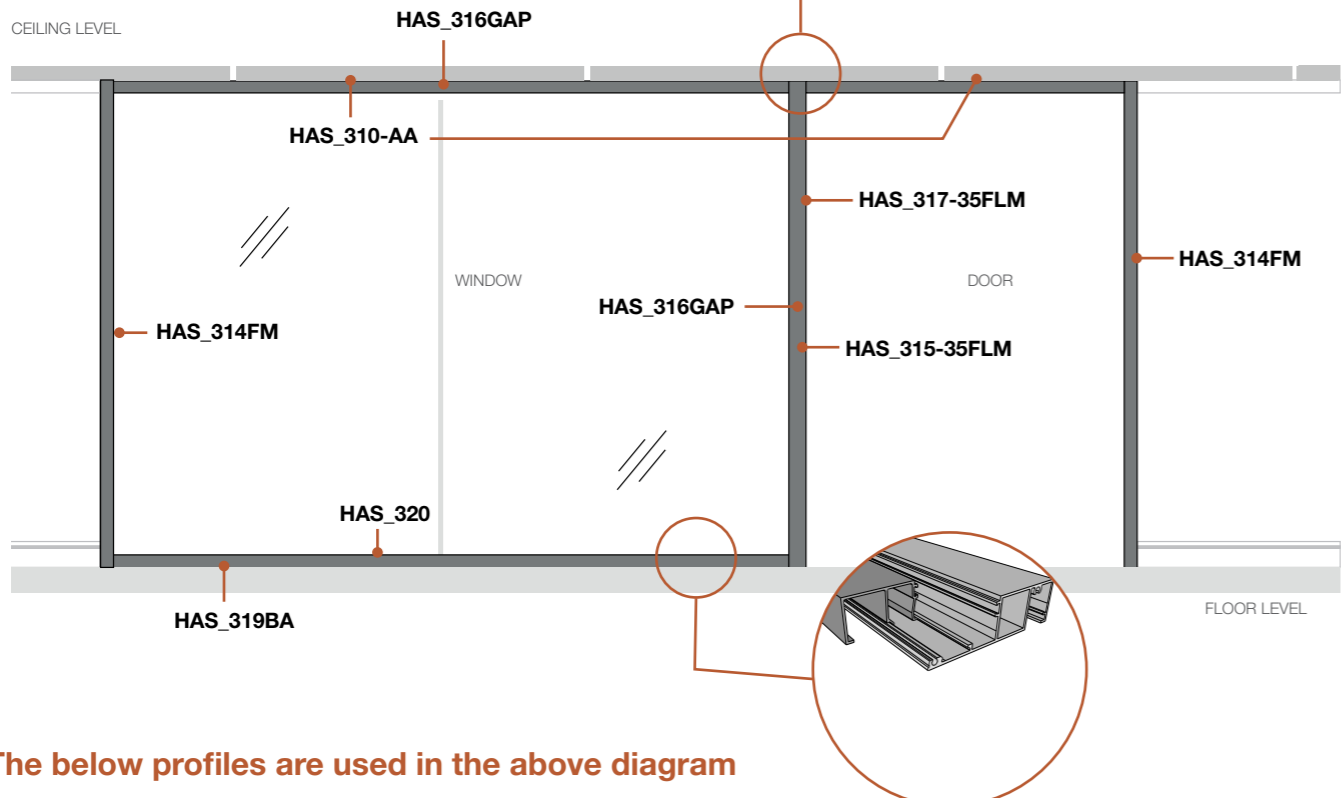
A Series 132 has the following features:

- Standard profile size of 132mm x 25mm, 132mm x 35mm, 132mm x 50mm
- Pocket depth inside 18mm
- Standard wall size based around 92mm steel stud with our layer of 13mm Gyprock plaster board on each side
- Can accommodate glass thickness between 6mm – 12.76mm
- Door thickness between 35mm -45mm can be used
- Shadow line details optional

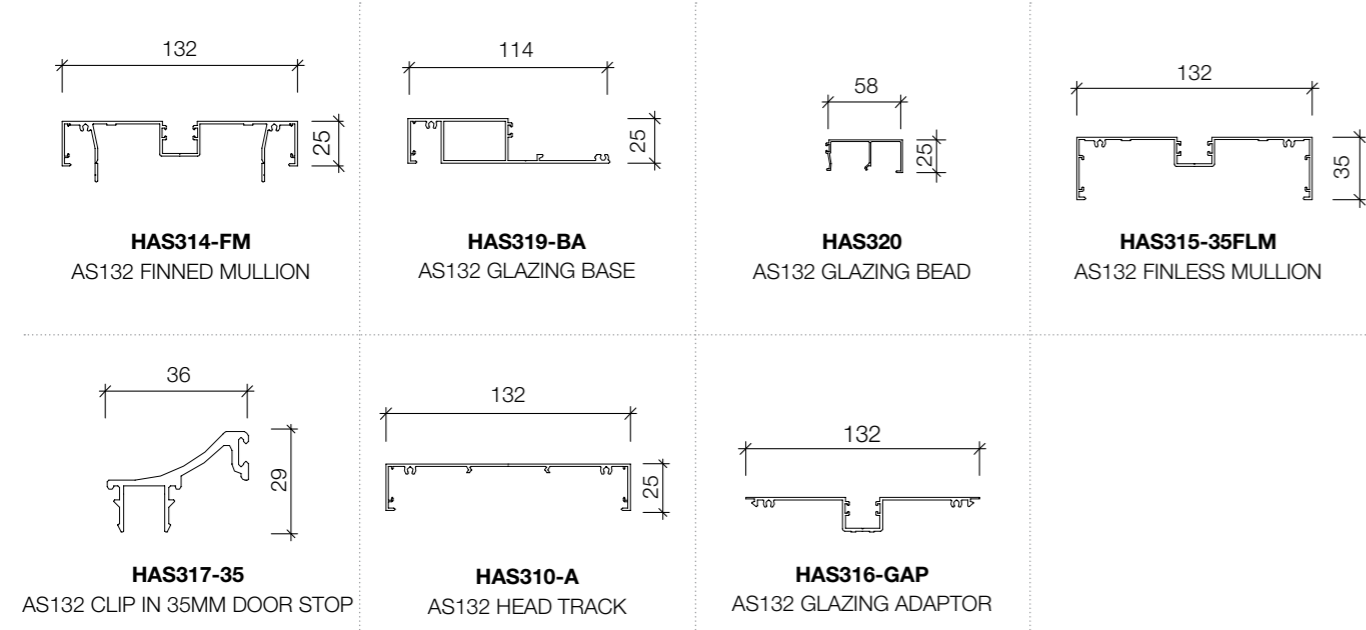
Typical Partition Elevations

Many partition systems have various ways to combine all components that can support catering to your individual project. We have featured the two most popular combinations below to give you a great starting point. Our Account Managers are here to support you and ensure your project needs are catered for.

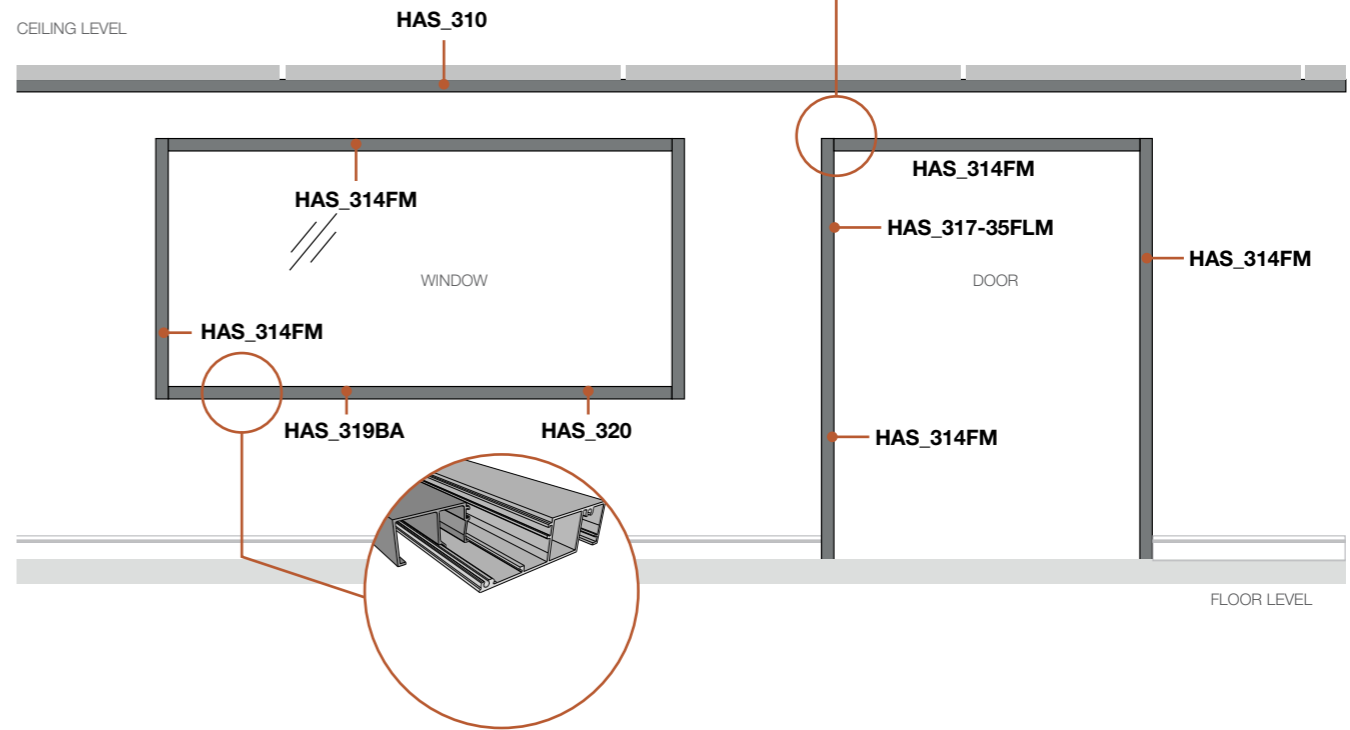
Wall Detail Option



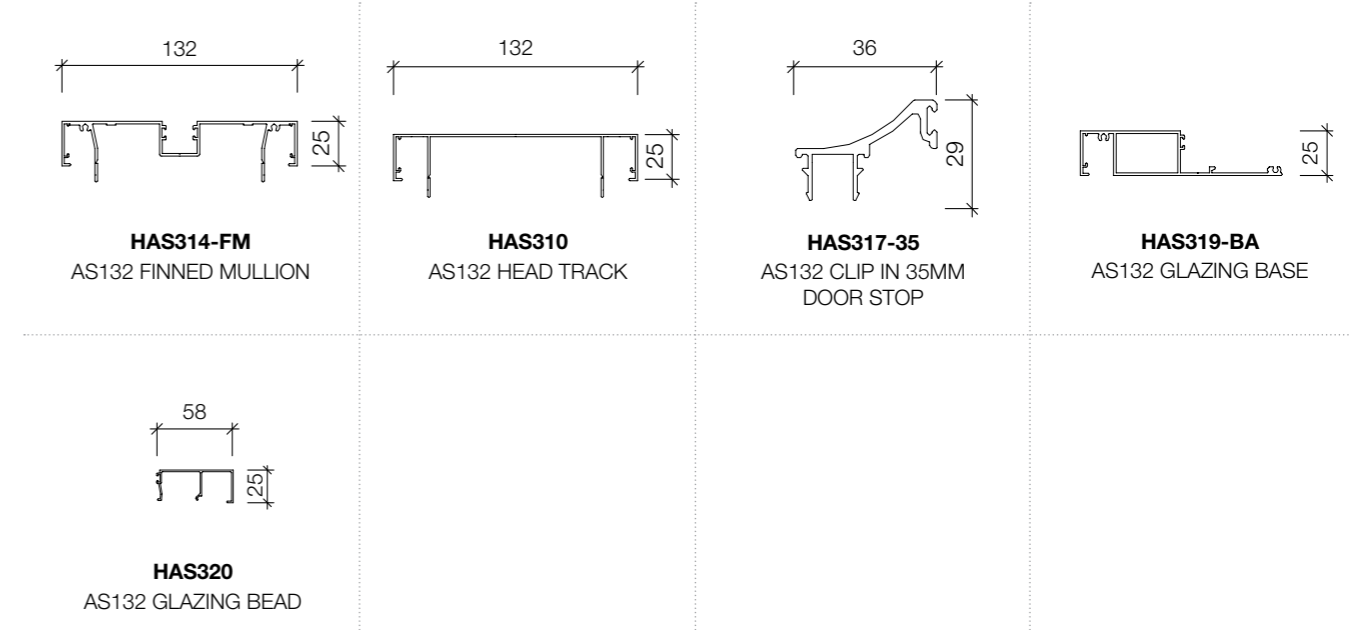
The below profiles are used in the above diagram



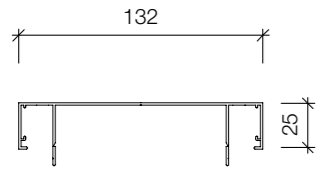
Door and Window Sections Option



The below profiles are used in the above diagram

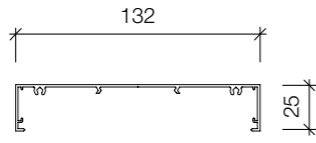


Suite Profiles



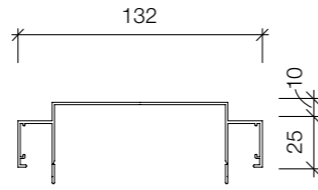
HAS310
AS132 HEAD TRACK
2.8M C/A: 181672
3.6M C/A: 181724
2.8M BLK: 452617
3.6M BLK: 452622

Available in: NSW, QLD, VIC/TAS, SA/NT, WA



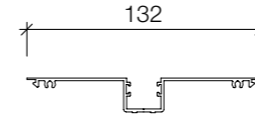
HAS310-A
AS132 HEAD TRACK
2.8M C/A: 452633
3.6M C/A: 452636
2.8M BLK: 452635
3.6M BLK: 452638

Available in: NSW, SA/NT



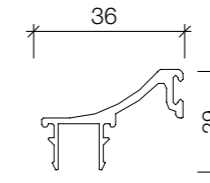
HAS310-SH
AS132 SHADOWLINE HEAD TRACK
2.8M C/A: 181647
3.6M C/A: 181706
2.8M BLK: 452642
3.6M BLK: 452644

Available in: NSW, VIC/TAS, WA



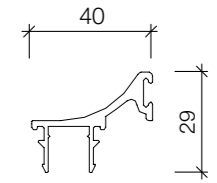
HAS316-GAP
AS132 GLAZING ADAPTOR
2.8M C/A: 181621
3.6M C/A: 181662
2.8M BLK: 452673
3.6M BLK: 452675

Available in: NSW, VIC/TAS, SA/NT, WA



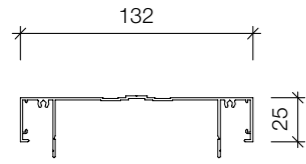
HAS317-35
AS132 CLIP IN 35MM DOOR STOP
2.8M C/A: 197692
3.6M C/A: 197695
2.8M BLK: 197694
3.6M BLK: 197697

Available in: NSW, QLD, VIC/TAS, SA/NT, WA



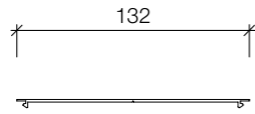
HAS317-40
AS132 CLIP IN 40MM DOOR STOP
2.8M C/A: 197698
3.6M C/A: 197701
2.8M BLK: 197700
3.6M BLK: 197703

Available in: NSW, QLD, VIC/TAS, SA/NT, WA



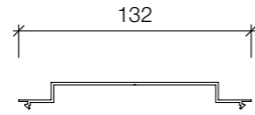
HAS310-R
AS132 REBATED HEAD TRACK
2.8M C/A: 452625
3.6M C/A: 452628
2.8M BLK: 452627
3.6M BLK: 452630

Limited Stock Available



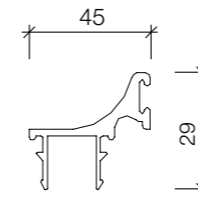
HAS311-FF
AS132 FLUSH FILLER
2.8M C/A: 181588
3.6M C/A: 181606

Available in: NSW, VIC/TAS, WA



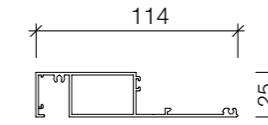
HAS311-SH
AS132 SHADOW CAP
2.8M C/A: 452648
3.6M C/A: 452649
2.8M BLK: 464685
3.6M BLK: 464686

Limited Stock Available



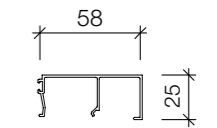
HAS318-45
AS132 CLIP IN 45MM DOOR STOP
2.8M C/A: 451472
3.6M C/A: 451475
2.8M BLK: 451474
3.6M BLK: 451477

Available in: NSW, QLD, VIC/TAS, SA/NT, WA



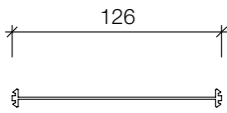
HAS319-BA
AS132 GLAZING BASE
2.8M C/A: 181665
3.6M C/A: 181720
2.8M BLK: 452677
3.6M BLK: 452679

Available in: NSW, QLD, VIC/TAS, SA/NT, WA



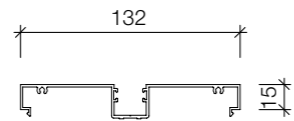
HAS320
AS132 GLAZING BEAD
2.8M C/A: 452680
3.6M C/A: 452683
2.8M BLK: 452682
3.6M BLK: 452685

Available in: NSW, QLD, VIC/TAS, SA/NT, WA



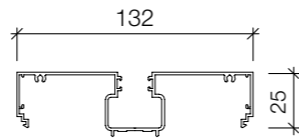
HAS311-JP
AS132 JOINTING PLATE
2.8M C/A: 187575
3.6M C/A: 452646
2.8M BLK: 464683
3.6M BLK: 464684

Limited Stock Available



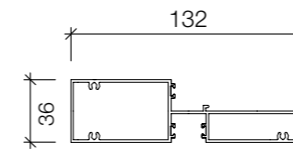
HAS312-MAP
AS132 MULLION ADAPTOR
2.8M C/A: 181644
3.6M C/A: 181701
2.8M BLK: 452652
3.6M BLK: 452654

Available in: NSW, QLD, VIC/TAS, WA



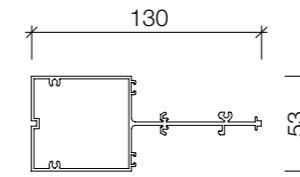
HAS314-A
AS132 DEEP POCKET MULLION
2.8M C/A: 452657
3.6M C/A: 452660
2.8M BLK: 452659
3.6M BLK: 452662

Available in: NSW



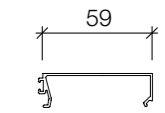
HAS321-A
AS132 GLAZING TRANSOM
2.8M C/A: 453359
3.6M C/A: 453372
2.8M BLK: 453371
3.6M BLK: 453374

Available in: NSW



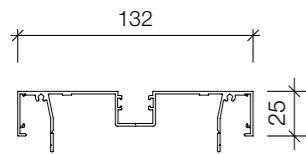
HAS321-B
AS132 GLAZING TRANSOM
2.8M C/A: 452686
3.6M C/A: 452689
2.8M BLK: 452688
3.6M BLK: 452691

Available in: NSW



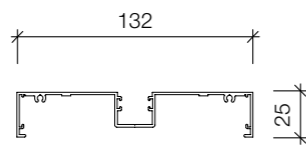
HAS322BE
AS132 GLAZING BEAD
2.8M C/A: 181546
3.6M C/A: 181561
2.8M BLK: 452692
3.6M BLK: 452693

Available in: NSW



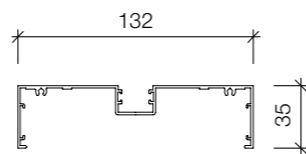
HAS314-FM
AS132 FINNED MULLION
2.8M C/A: 181704
3.6M C/A: 181741
2.8M BLK: 452655
3.6M BLK: 452656

Available in: NSW, QLD, VIC/TAS, SA/NT, WA



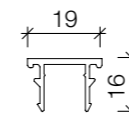
HAS315-25FLM
AS132 FINLESS MULLION
2.8M C/A: 181646
3.6M C/A: 181705
2.8M BLK: 452664
3.6M BLK: 452666

Available in: NSW, QLD, SA/NT



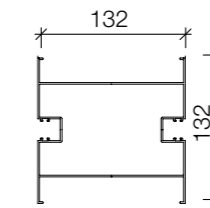
HAS315-35FLM
AS132 FINLESS MULLION
2.8M C/A: 452667
3.6M C/A: 452670
2.8M BLK: 452669
3.6M BLK: 452672

Available in: NSW, QLD, VIC/TAS, WA



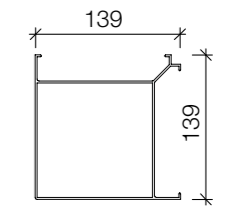
HAS023FP
AS132 FILLER PLATE
2.8M C/A: 155007
3.6M C/A: 181510
2.8M BLK: 181502
3.6M BLK: 181512

Available in: NSW, QLD, VIC/TAS, SA/NT, WA



HAS324-CP
AS132 CORNER POST
2.8M C/A: 181753
3.6M C/A: 452695
2.8M BLK: 452694
3.6M BLK: 452697

Available in: NSW



HAS324-FCP
AS132 FLUSH CORNER POST
2.8M C/A: 452698
3.6M C/A: 452701
2.8M BLK: 452700
3.6M BLK: 452703

Available in: NSW



Partition C Series 45

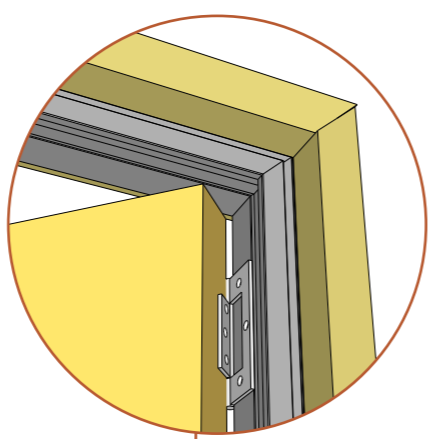
C Series 45 is used as a commodity system when the budget is a factor, it can be designed into the A Series for a slimmer look.

C Series 45 has the following features:

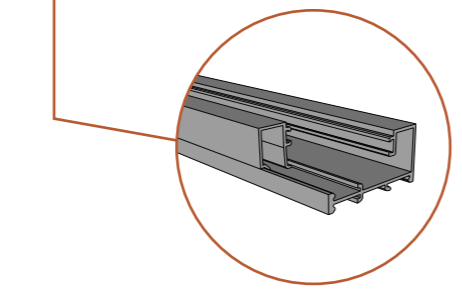
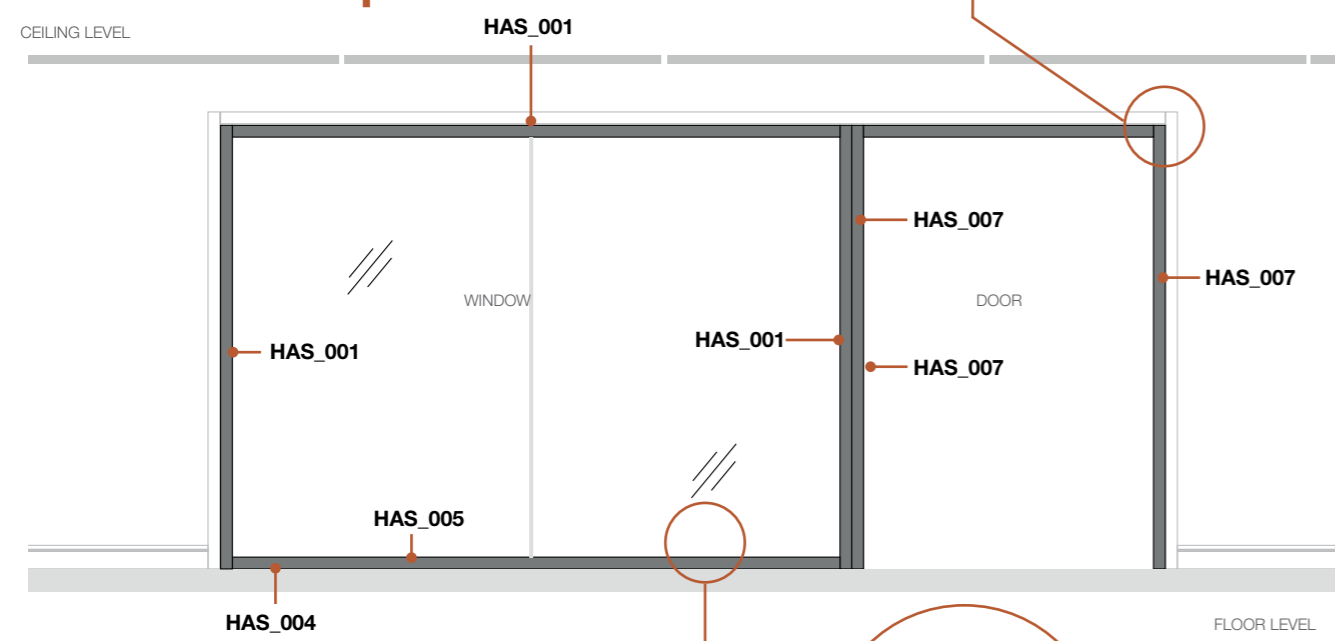
- Standard glazing profile of 45mm wide x 25mm high
- Stocked in 2 colours (Clear anodised / Powder coated Black)
- Can be used with the AS104/AS132 suite by using the Head/sill track
- Can accommodate glass thicknesses between 6mm and 13mm
- Can accommodate door thicknesses between 35mm and 45mm
- Door frame kits available

Typical Partition Elevations

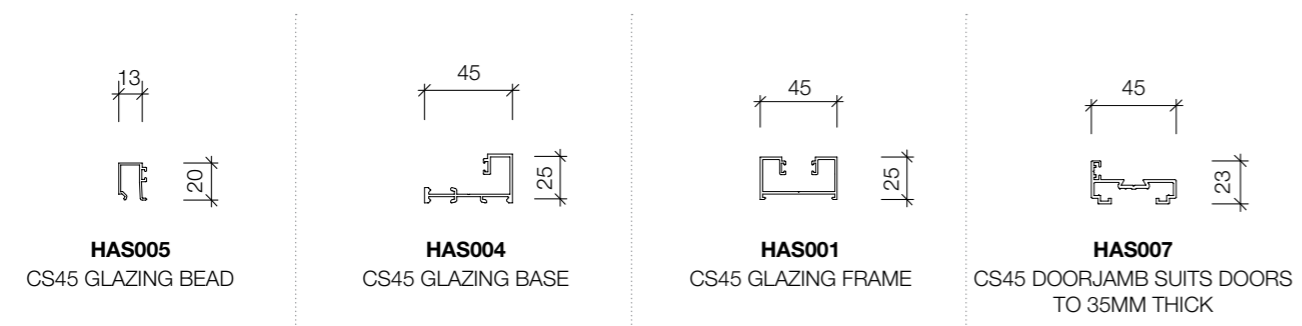
Many partition systems have various ways to combine all components that can support catering to your individual project. We have featured the two most popular combinations below to give you a great starting point. Our Account Managers are here to support you and ensure your project needs are catered for.



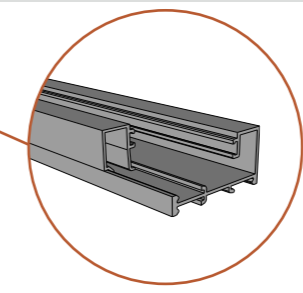
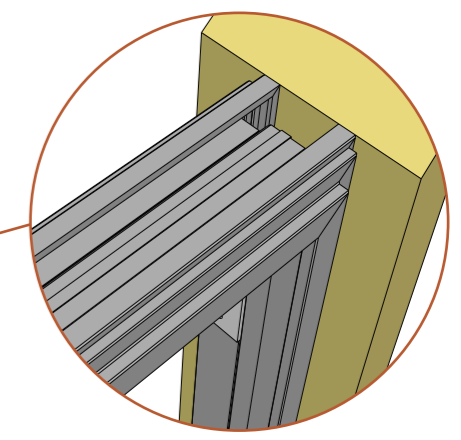
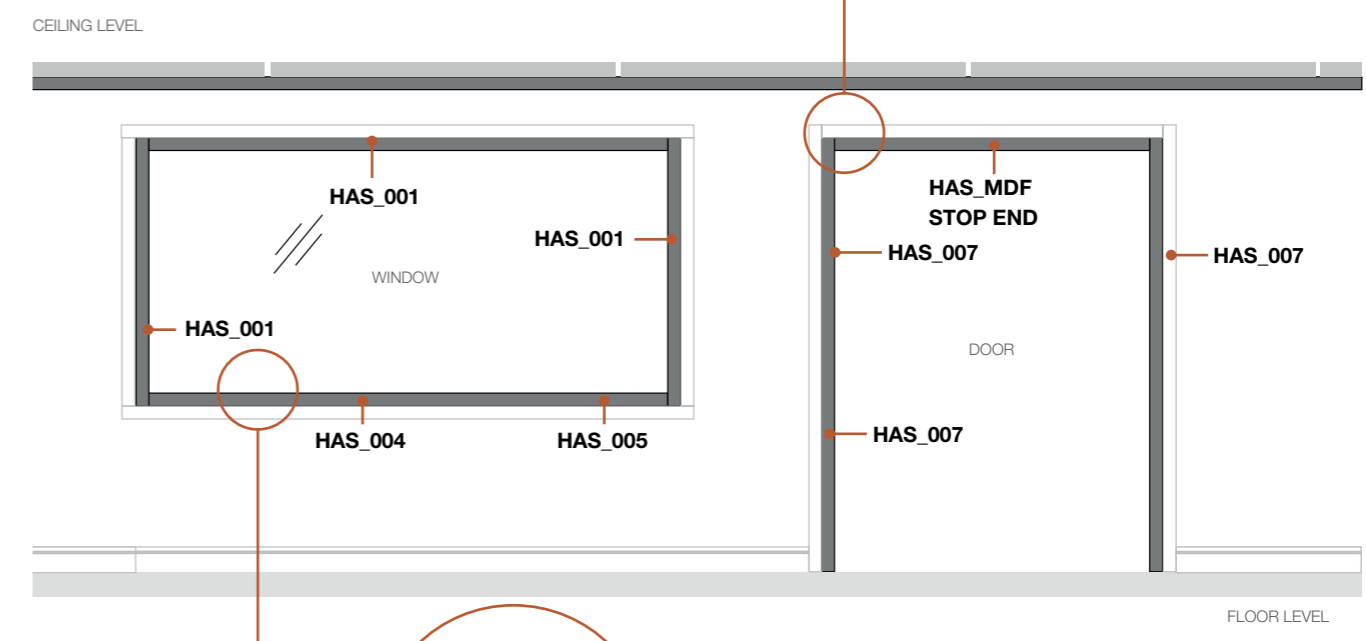
Wall Detail - Option



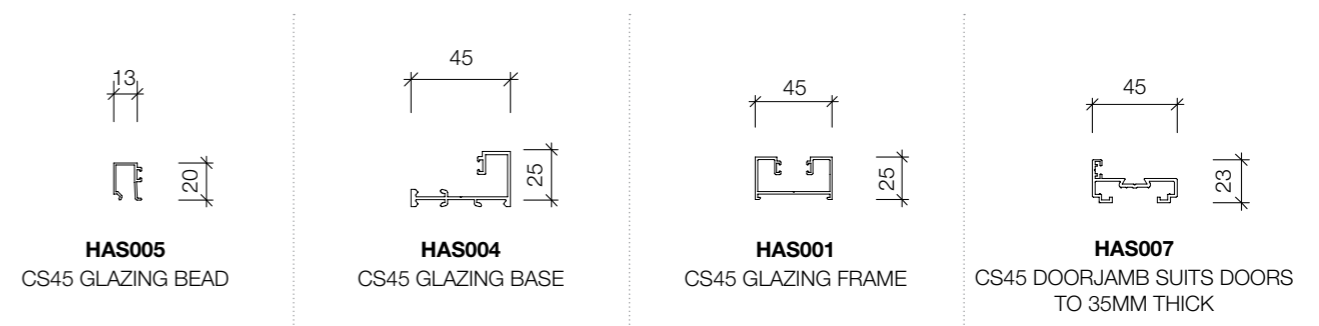
The below profiles are used in the above diagram



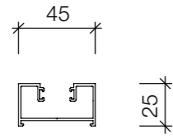
Door and Window Section Option



The below profiles are used in the above diagram



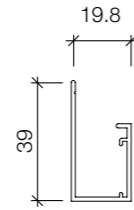
Suite Profiles



HAS001
CS45 GLAZING FRAME

- 2.8M C/A: 176904
- 3.6M C/A: 181581
- 2.8M BLK: 181563
- 3.6M BLK: 181583

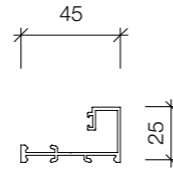
Available in: NSW, VIC/TAS, SA/NT, WA



HAS002
CS45 EXTENDER TRACK

- 3.6M M/F: 455351
- 3.6M C/A: 455350
- 3.6M BLK: 455352

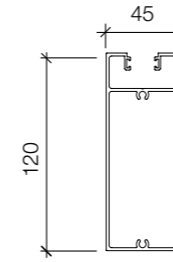
Available in: VIC/TAS, WA



HAS004
CS45 GLAZING BASE

- 2.8M C/A: 103275
- 3.6M C/A: 167894
- 2.8M BLK: 160173
- 3.6M BLK: 181573

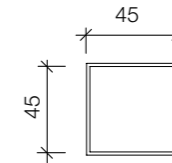
Available in: NSW, VIC/TAS, WA



HAS004-GP120
CS45 GLAZING POST

- 2.8M C/A: 453838
- 3.6M C/A: 453971
- 2.8M BLK: 453970
- 3.6M BLK: 453973

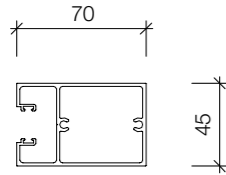
Available in: VIC/TAS, WA



HAS 45X45MM
CS45 45X45MM BOX POST

- 2.8M C/A: 103279
- 6.5M C/A: 181993
- 2.8M BLK: 160221
- 6.5M BLK: 188037

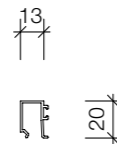
Limited Stock Available



HAS004-GP70
CS45 GLAZING POST

- 2.8M C/A: 450245
- 3.6M C/A: 450248
- 2.8M BLK: 450247
- 3.6M BLK: 450270

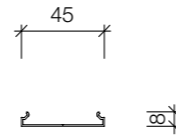
Available in: NSW, VIC/TAS, WA



HAS005
CS45 GLAZING BEAD

- 2.8M C/A: 103250
- 3.6M C/A: 167895
- 2.8M BLK: 160211
- 3.6M BLK: 181529

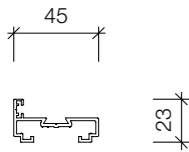
Available in: NSW, VIC/TAS, SA/NT, WA



HAS006
CS45 GLAZING COVER

- 2.8M C/A: 155054
- 3.6M C/A: 181520
- 2.8M BLK: 160212
- 3.6M BLK: 181522

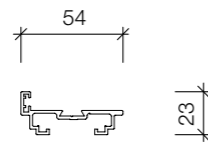
Available in: NSW, VIC/TAS, WA



HAS007
CS45 DOORJAMB SUITS DOORS TO 35MM THICK

- 2.8M C/A: 103271
- 3.6M C/A: 167897
- 2.8M BLK: 160213
- 3.6M BLK: 181586

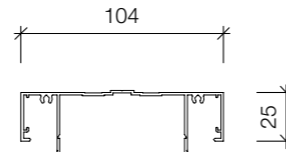
Available in: NSW, VIC/TAS, WA



HAS008
CS45 DOORJAMB SUITS DOORS TO 40-45MM THICK

- 2.8M C/A: 103272
- 3.6M C/A: 181602
- 2.8M BLK: 160215
- 3.6M BLK: 181604

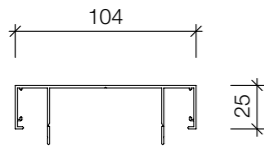
Available in: NSW, VIC/TAS, WA



HAS010-R
AS104 REBATED HEAD TRACK

- 2.8M C/A: 453242
- 3.6M C/A: 453247
- 2.8M BLK: 453246
- 3.6M BLK: 453249

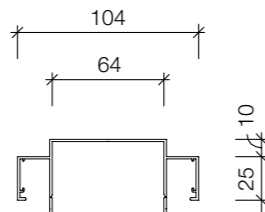
Limited stock available



HAS010-FH
AS104 HEAD/SILL TRACK

- 2.8M C/A: 103278
- 3.6M C/A: 181680
- 2.8M BLK: 160222
- 3.6M BLK: 181682

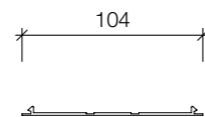
Limited Stock Available



HAS010-SH
AS104 SHADOWLINE HEADTRACK

- 2.8M C/A: 155064
- 3.6M C/A: 181695
- 2.8M BLK: 182828
- 3.6M BLK: 181697

Limited Stock Available



HAS011
AS104 FLUSH FILLER

- 2.8M C/A: 155059
- 3.6M C/A: 181591
- 2.8M BLK: 160226
- 3.6M BLK: 181593

Limited Stock Available



Partition DS Series 45

DS Series 45 are a combination of doors and sliders designed to fit with Himmel Aluminium Systems, with the following features:

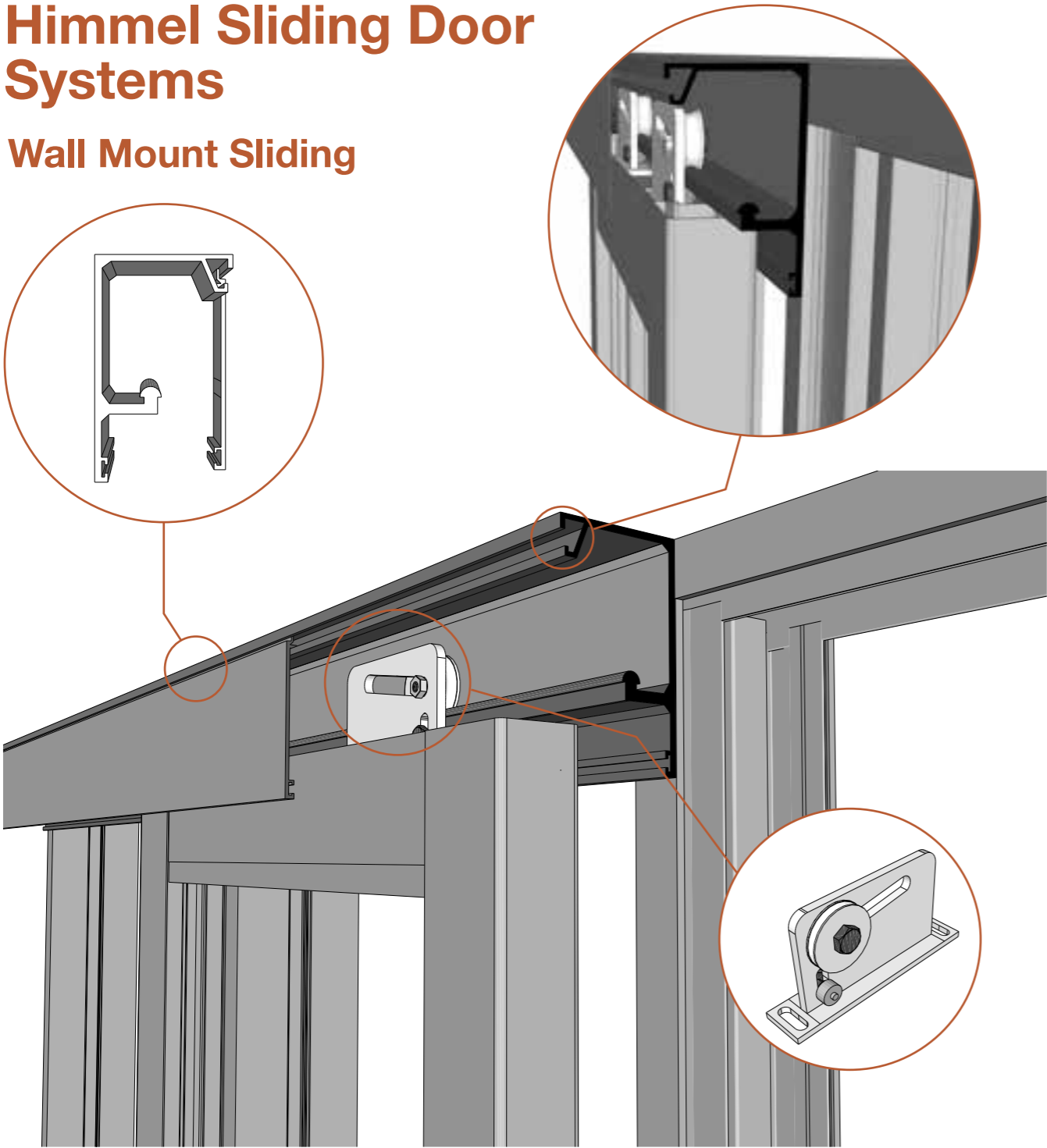
- Designed to fit with Himmel Aluminium Systems
- Available in 45mm thick doors only
- Styles and rails sizes 60mm, 66mm, 83mm and 114mm
- Can accommodate glass thicknesses of 13mm thick laminated glass
- Door kits available in 62mm & 114mm Stile

Typical Partition Elevations

DS Series 45 are designed to fit with Himmel Aluminium systems and available in numerous configurations based around the 45mm door series. Our Account Managers are here to support you and ensure your project needs are catered for.

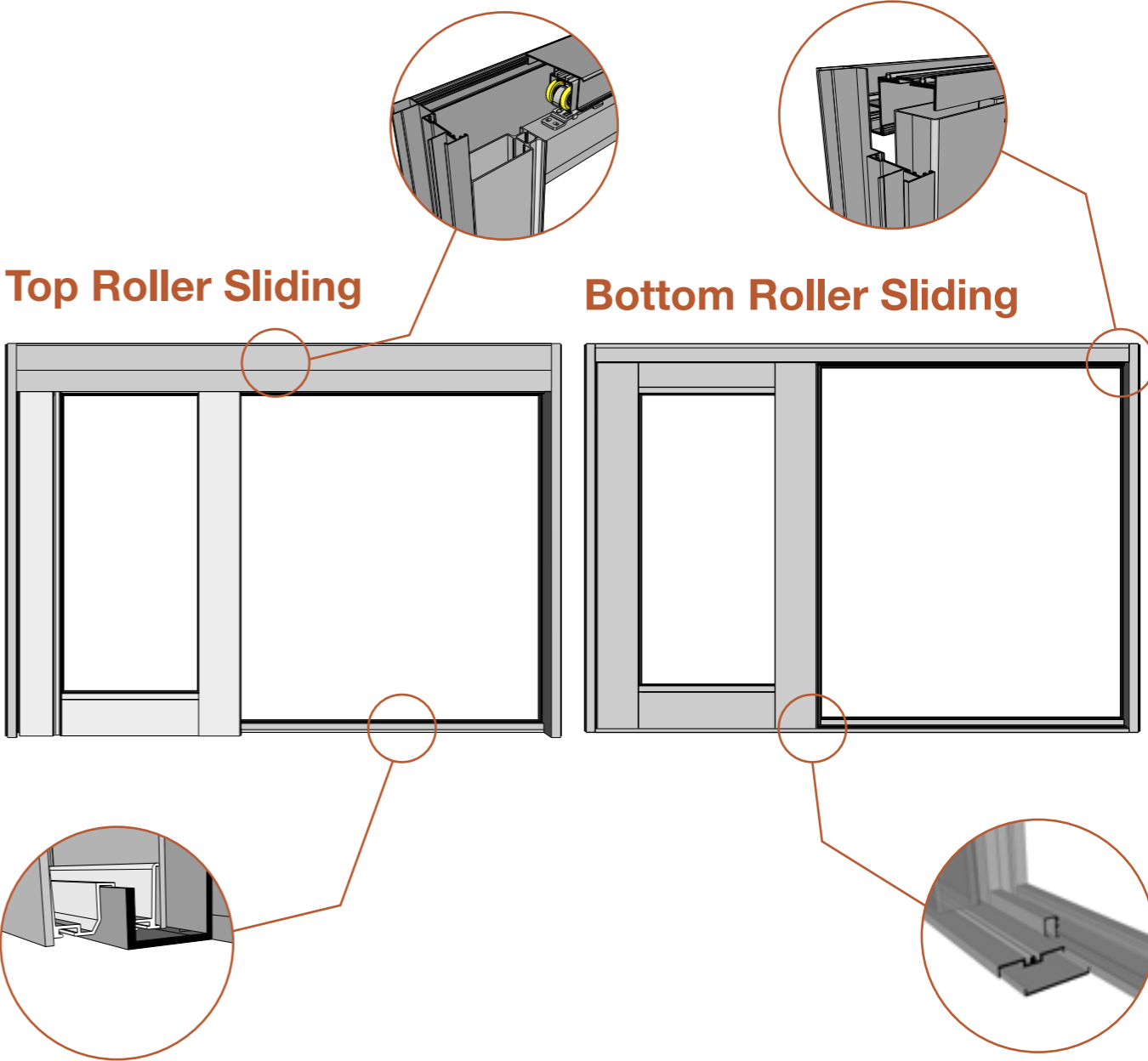
Himmel Sliding Door Systems

Wall Mount Sliding



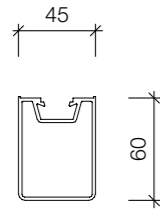
Top Roller Sliding

Bottom Roller Sliding



Himmel Interior Systems are here to support your project requirements. With a range of hinged and sliding door hardware complementing our contemporary aluminium partitioning suites, Himmel provides the ultimate door safety, security and performance solution.

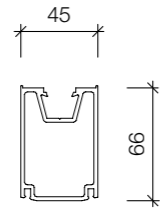
Suite Profiles



HAS520
DS45 60MM PLAIN STILE

2.8M C/A: 453560
3.6M C/A: 453563
2.8M BLK: 453562
3.6M BLK: 453565

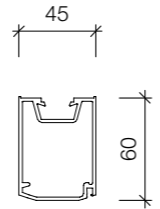
Available in: NSW



HAS521
DS45 66MM PIVOT STILE

2.8M C/A: 182078
6.5M C/A: 182144
2.8M BLK: 182080
6.5M BLK: 187755

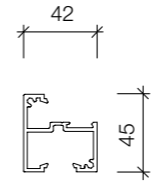
Available in: NSW



HAS522
DS45 60MM LOCK STILE

2.8M C/A: 182058
6.5M C/A: 182128
2.8M BLK: 182060
6.5M BLK: 182130

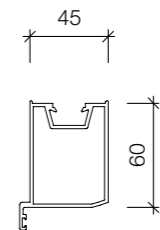
Available in: NSW



HAS532
DS45 45MM MID-RAIL

6.5M C/A: 182110

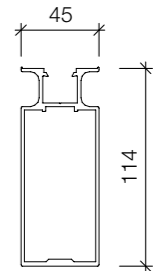
Available in: NSW



HAS533
DS45 60MM MEETING STILE

3.25M C/A: 188256
6.5M C/A: 182136
3.25M BLK: 188258
6.5M BLK: 182138

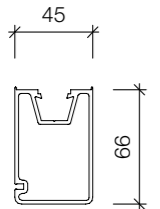
Available in: NSW



HAS534
DS45 114MM FINGER PULL STILE

2.8M C/A: 182101
6.5M C/A: 182158
2.8M BLK: 182103
6.5M BLK: 182138

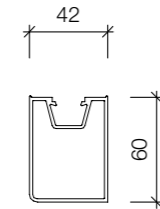
Available in: NSW



HAS523
DS45 66M SLIDE BACK STILE

2.8M C/A: 182074
6.5M C/A: 182140
2.8M BLK: 182076
6.5M BLK: 182142

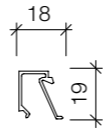
Available in: NSW



HAS524
DS45 60MM HINGE STILE

2.8M C/A: 182050
6.5M C/A: 182124
2.8M BLK: 182052
6.5M BLK: 182126

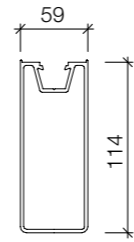
Available in: NSW



HAS528
DS45 DOOR RAIL BEAD

2.8M C/A: 181506
3.6M C/A: 181524
2.8M BLK: 181507
3.6M BLK: 181526

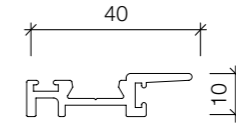
Available in: NSW, VIC/TAS, WA



HAS535
DS45 114MM PLAIN STILE

2.8M C/A: 178109
6.5M C/A: 182162
2.8M BLK: 182106
6.5M BLK: 182164

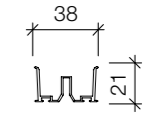
Available in: NSW



HAS506
DS45 SLIDING DOOR PICK UP

3.0M C/A: 456863
3.0M BLK: 456864

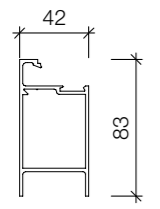
Available in: NSW



HAS507
DS45 T-ROLLER INTERNAL GUIDE

3M MILL: 453556
MILL Finish hidden profile

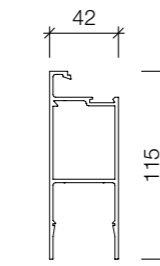
Available in: NSW



HAS525
DS45 83MM TOP RAIL

2.8M C/A: 182062
3.6M C/A: 182086
2.8M BLK: 182064
3.6M BLK: 182088

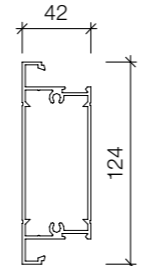
Available in: NSW, VIC/TAS, WA



HAS526
DS45 115MM BOTTOM RAIL

2.8M C/A: 182082
3.6M C/A: 182112
2.8M BLK: 182084
3.6M BLK: 182114

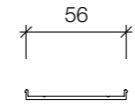
Available in: NSW, VIC/TAS, WA



HAS527
DS45 124MM MID-RAIL

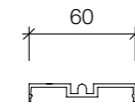
6.5M C/A: 182869
6.5M BLK: 182871

Available in: NSW



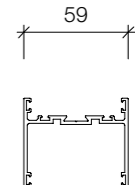
HAS508-A
DS45 BOTTOM ROLLER TRACK A
5M MILL: 197688
MILL Finish hidden profile

Available in: NSW



HAS508-B
DS45 BOTTOM ROLLER TRACK B
5M C/A: 197689
5M BLK: 197690

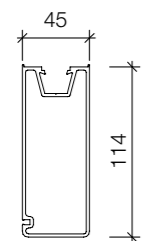
Available in: NSW



HAS509
DS45 SLIDING DOOR LOCATING FRAME

2.8M C/A: 450323
3.6M C/A: 450326
2.8M BLK: 450324
3.6M BLK: 450327

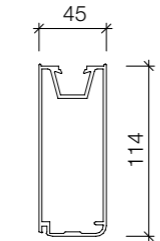
Available in: NSW



HAS529
DS45 114MM SLIDING STILE

2.8M C/A: 178110
6.5M C/A: 182166
2.8M BLK: 182108
6.5M BLK: 182168

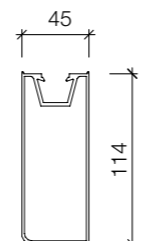
Available in: NSW



HAS530
DS45 114MM LOCK STILE

2.8M C/A: 182097
6.5M C/A: 182154
2.8M BLK: 182099
6.5M BLK: 182156

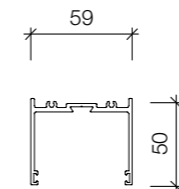
Available in: NSW



HAS531
DS45 114MM DOOR HINGE STILE

2.8M C/A: 182090
6.5M C/A: 182150
2.8M BLK: 182091
6.5M BLK: 182152

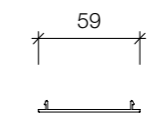
Available in: NSW



HAS510
DS45 BOTTOM ROLLER TOP GUIDE FRAME

5M C/A: 450329
5M BLK: 450330

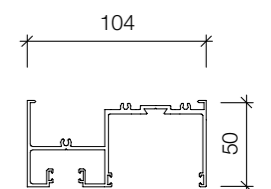
Available in: NSW



HAS511
DS45 BOTTOM ROLLER TOP GUIDE CAP

3M C/A: 450332
3M BLK: 450333

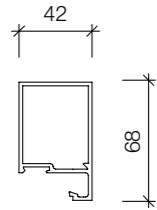
Available in: NSW



HAS512
DS45 BOTTOM ROLLER 1 PC TOP GUIDE FRAME

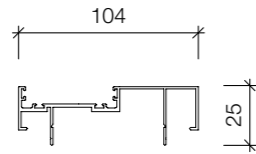
5M C/A: 450335
5M BLK: 450336

Available in: NSW



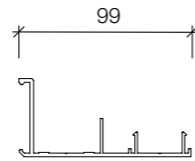
HAS525F
DS45 130 TOP RAIL 68MM
3M C/A: 453266
3M BLK: 453268

Available in: NSW



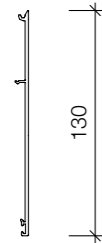
HAS549
DS45 DOOR LOCATING FRAME
2.8M C/A: 450341
3.6M C/A: 450344
2.8M BLK: 450342
3.6M BLK: 450345

Limited Stock Available



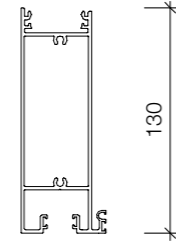
HAS550
DS45 130 TOP ROLLER BASE FRAME
5M C/A: 450347
5M BLK: 450348

Limited Stock Available



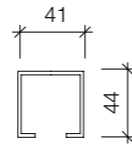
HAS551
DS45 130 TOP ROLLER PELMET
5M C/A: 450350
5M BLK: 450351

Limited Stock Available



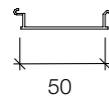
HAS552
DS45 130 TOP ROLLER MAIN FRAME
5M C/A: 450353
5M BLK: 450354

Limited Stock Available



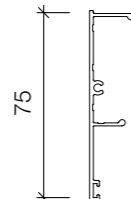
HAS553
DS45 200T ROLLER TRACK
5M C/A: 453269

Available in: NSW



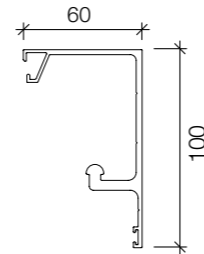
HAS554
DS45 130 TOP ROLLER PELMET CAP
3M C/A: 450356
3M BLK: 450357

Available in: NSW



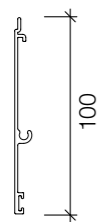
HAS555
DS45 75 TOP ROLLER PELMET
5M M/F: 453282
5M C/A: 453280
5M BLK: 453281

Available in: NSW



HAS556
DS45 WALL MOUNT SLIDE TRACK
6.5M C/A: 187436
6.5M BLK: 473680

Limited Stock Available



HAS557
WALL MOUNT SLIDE COVER
6.5M C/A: 187437
6.5M BLK: 473681

Limited Stock Available

Door Kits

Himmel Aluminium door kits are a complete system that saves you time and money. Made from high quality aluminium, the kit includes everything required to build a complete aluminium door. Himmel offers options for a 61mm or 114mm stile for hinged and sliding doors.



Sliding Door Kits

DS45 SLIM STILE SLIDING DOOR KIT C/A: 181447 P/B: 182858	
ITEM	QTY
66mm Slide Back Stile @2.8m	1
60mm Plain Stile @2.8m	1
84mm Top Rail @1m	1
115mm Bottom Rail @1m	1
Door Bead @2m	2
Spiggot Set (x4)	1

DS45 114MM WIDE STILE SLIDING DOOR KIT C/A: 182874 P/B: 182875	
ITEM	QTY
114mm Slide Stile @2.8m	1
114mm Lock Stile @2.8m	1
115MM Bottom Rail @2m	1
Door Bead @2m	1
Spiggot Set (x4)	1

Hinged Door Kits

DS 524 KIT: 61MM SLIM STILE HINGED DOOR KIT C/A: 124859 P/B: 160235	
ITEM	QTY
61mm Wide Lock Stile @2.8m	1
61mm Wide Hinge Stile @2.8m	1
83mm High Top Rail @1m	1
115mm High Bottom Rail @1m	1
Door Bead @2m	1
Spiggot Set (x4)	1

DS 531 KIT: 114MM WIDE STILE HINGED DOOR KIT C/A 159071 P/B 170389	
ITEM	QTY
114mm Wide Lock Stile	1
114mm Wide Hinge Stile @2.8m	1
115mm High Bottom Rail @2m	1
Door Bead @2m	1
Spiggot Set (x4)	1

These door kits builds max height 2.8m width 1m

If a larger door is required, refer to the profile page to order individual sections or contact your Account Manager.

LEFT HAND AND RIGHT HANDED DOOR KITS

CODE	DESCRIPTION	
182860	DS45 HAS SLIM STILE HINGE LH DOOR KIT CA	MORTISED HINGED SLIM STILE ALUMINIUM DOOR KITS
182862	DS45 HAS SLIM STILE HINGE LH DOOR KIT PB	MORTISED HINGED SLIM STILE ALUMINIUM DOOR KITS
182861	DS45 HAS SLIM STILE HINGE RH DOOR KIT CA	MORTISED HINGED SLIM STILE ALUMINIUM DOOR KITS
182863	DS45 HAS SLIM STILE HINGE RH DOOR KIT PB	MORTISED HINGED SLIM STILE ALUMINIUM DOOR KITS
182883	DS45 HAS WIDE STILE HINGE LH DOOR KIT CA	MORTISED HINGED WIDE STILE ALUMINIUM DOOR KITS
182885	DS45 HAS WIDE STILE HINGE LH DOOR KIT PB	MORTISED HINGED WIDE STILE ALUMINIUM DOOR KITS
182884	DS45 HAS WIDE STILE HINGE RH DOOR KIT CA	MORTISED HINGED WIDE STILE ALUMINIUM DOOR KITS
182886	DS45 HAS WIDE STILE HINGE RH DOOR KIT PB	MORTISED HINGED WIDE STILE ALUMINIUM DOOR KITS

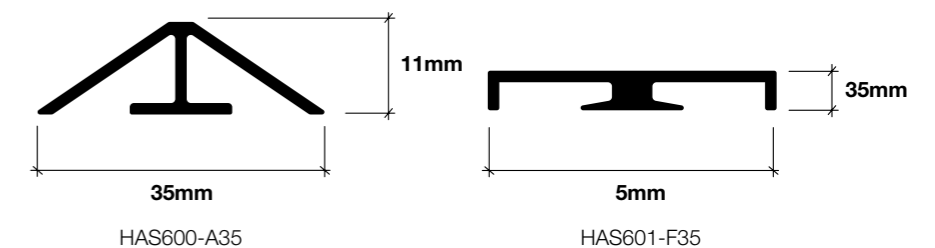


SOHO Decorative Glazing

Recognising the need for a fast and easy way to install a decorative glazing look, we have introduced Soho, two 'stick on' options for interior partitions. Soho is a lightweight aluminium curated to attach to the glazing with industrial strength adhesive, meaning your project can now achieve the same industrial style glazing look, in a fraction of the time. Our decorative glazing rails Soho are extremely versatile and can be positioned on the glazing panel in a variety of ways allowing you to deliver a unique solution for the office that's on trend. Available in 35mm A-Frame Bar and Flat Bar, both of which are intended to complement the visual appeal of Aluminium Partition Suites and Doors. These decorative glazing rails are designed to provide an artistic feel to the Himmel partition suites and are not necessary to strengthen the structure of the partitioning in situ.

To install the Soho decorative glazing rails, the below procedure is recommended:

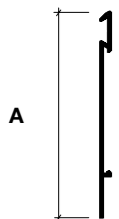
- Plan and design the layout of your overall look
- Designed to be back-to-back in line with each other, so that the pieces are not visible on the other side
- Place 18mm double-sided tape onto the rail surface
- In addition to tape, we recommend placing polymer adhesive and sealant close to both ends of the trim and on every lineal metre. This creates a high bond hold which reinforces the weak points to ensure that it does not peel
- Place the Soho decorative glazing rails pieces on the glazing panel to create your desired look



DESCRIPTION (A x B x C)	LENGTH	CLEAR ANODISE	P/COATED BLACK	MILL FINISH
STICK ON GLAZING RAILS HAS600 - A35	3600mm	454680	454682	454681
STICK ON GLAZING RAILS HAS601 - F35	3600mm	454683	454684	454685

Skirting and Flat Bar

Himmel offers a range of architectural profiles for the interior commercial landscape. From skirting and flat bar, through to angles, sections and channels, the Himmel Skirting and Geometric range offers a premium finish and versatility, speed and precision during installation.

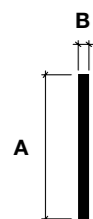


Skirting

Himmel screw on skirting offers seamless continuity between floor and wall, achieving maximum protection in high traffic areas. Manufactured from high grade powder coated aluminium extruded profiles, Himmel skirting products are synonymous with design, performance and sustainability. Available in a range of modern powder coated and anodised finishes, and fastener wall fixed for quick installation, Himmel skirting is the trusted solution to finish your commercial projects.

DESCRIPTION (A x B x C)	LENGTH	CLEAR ANODISE	P/COATED BLACK	P/COATED WHITE	MILL FINISH
SKIRTING - 50mm	2800mm	181530			181531
SKIRTING - 100mm	2800mm	103282	108773	181550	181549
SKIRTING - 100mm	3600mm	103298	160218	181568	181567
SKIRTING - 125mm	2800mm	166220			181574
SKIRTING - 150mm	2800mm	103283	160219		181589
SKIRTING - 150mm	3600mm	103299	160220		181607

** Accessories are required when using this type of skirting such as Corners,Cover strips,joiners and screws **



Flat Bar

Himmel flat bars protect internal walls in high traffic areas from accidental knocks, abrasions, and general wear and tear. Glue fixed and quick to install, and available in a range of finishes, Himmel flat bars can also be used as finishing window details and header details. Himmel provides a solution that compliments functional interiors in the commercial sectors.

DESCRIPTION (A x B x C)	LENGTH	CLEAR ANODISE	P/COATED BLACK	P/COATED WHITE	MILL FINISH
FLAT BAR - 25mm x 1.6mm	2800mm	103262	160237	154965	181825
FLAT BAR - 25mm x 1.6mm	4000mm	187836		181833	181831
FLAT BAR - 25mm x 3mm	2800mm	181837	181839	181840	181838
FLAT BAR - 25mm x 3mm	4000mm	181856			181972
FLAT BAR - 50mm x 1.6mm	2800mm	455549	182846	182847	
FLAT BAR - 50mm x 1.6mm	4000mm	182848	182850	182851	182849
FLAT BAR - 50mm x 3mm	2800mm	169483	181876	179006	181875
FLAT BAR - 50mm x 3mm	4000mm	159092	181915	181916	181914
FLAT BAR - 100mm x 1.6mm	2800mm	155058	170413	179646	179646
FLAT BAR - 100mm x 1.6mm	3600mm	170412	163907	179185	181906
FLAT BAR - 100mm x 3mm	2800mm	181946	181948	181949	181947
FLAT BAR - 100mm x 3mm	4000mm	159054	181973	181974	181972
FLAT BAR - 150mm x 1.6mm	2800mm	181928	181930	181931	181929
FLAT BAR - 150mm x 1.6mm	3600mm	170414	181952		181951
FLAT BAR - 150mm x 3mm	3600mm	181989			181990

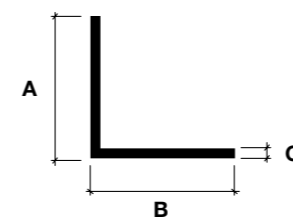
Corners and Jointer

CODE	DESCRIPTION
456991	SKIRTING CORNER 100MM BLK CORNER EA
455381	SKIRTING CORNER 100MM GREY CORNER EA
456992	SKIRTING CORNER 150MM BLK CORNER EA
455382	SKIRTING CORNER 150MM GREY CORNER EA
187817	SKIRTING CORNER 100MM WHITE EA
187361	SKIRTING CORNER 150MM WHITE EA
455383	SKIRTING CORNER SKIRTING JOINTER EA

Geometrics

Himmel geometrics provide a finishing or trimming solution for untidy edges, gaps and junctions, as well as decorative glazing for maximum appeal. From angles, channels, T and box section profiles and stick- on glazing options, Himmel geometrics provides the finishing touches on partitioning.

Available in a variety of thickness from 1.6mm to 3mm, and lengths of 3250mm and 6500mm. Finishing options include clear anodized, power coated black, power coated white and milled finish for those special colour requirements.



Angles

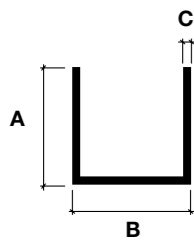
Himmel angles offer a great trimming solution, hiding gaps around shopfront or window framing.

DESCRIPTION (A x B x C)	LENGTH	CLEAR ANODISE	P/COATED BLACK	P/COATED WHITE	MILL FINISH
ANGLE - 12mm x 12mm x 1.6mm	6500mm	181841	179734	179735	134488
ANGLE - 15mm x 15mm x 1.6mm	6500mm	181860			134489
ANGLE - 16mm x 16mm x 3mm	6500mm	181907			181908
ANGLE - 20mm x 20mm x 1.6mm	6500mm	181872	181873	181874	155262
ANGLE - 20mm x 20mm x 3mm	3250mm	188311			188312
ANGLE - 20mm x 20mm x 3mm	6500mm	180909			181932
ANGLE - 25mm x 25mm x 1.6mm	3250mm	188329	188331	188332	188330
ANGLE - 25mm x 25mm x 1.6mm	6500mm	181889	181891	181892	181890
ANGLE - 25mm x 25mm x 3mm	3250mm	188336			188337
ANGLE - 25mm x 25mm x 3mm	6500mm	181953			181954
ANGLE - 32mm x 32mm x 1.6mm	3250mm	188407			
ANGLE - 32mm x 32mm x 1.6mm	6500mm	181922			181923
ANGLE - 32mm x 32mm x 3mm	3250mm	188409			188410
ANGLE - 32mm x 32mm x 3mm	6500mm	181970			181971
ANGLE - 40mm x 40mm x 1.6mm	3250mm	188434	188436	188437	
ANGLE - 40mm x 40mm x 1.6mm	6500mm	181940	181942	181943	181941
ANGLE - 40mm x 40mm x 3mm	3250mm	188440			188441
ANGLE - 40mm x 40mm x 3mm	6500mm	181987			181988
ANGLE - 50mm x 50mm x 1.6mm	3250mm	188458	188460	188461	188459
ANGLE - 50mm x 50mm x 1.6mm	6500mm	181961	181962	181963	179997
ANGLE - 50mm x 50mm x 3mm	3250mm	188462			188462
ANGLE - 50mm x 50mm x 3mm	6500mm	181997			181998
ANGLE - 60mm x 60mm x 3mm	3250mm				188466
ANGLE - 60mm x 60mm x 3mm	6500mm				183210
ANGLE - 20mm x 12mm x 1.6mm	6500mm	169977	181861	179643	179641
ANGLE - 20mm x 12mm x 3mm	6500mm	181902			181902
ANGLE - 25mm x 12mm x 1.6mm	6500mm	181865	181867	181868	181866
ANGLE - 25mm x 12mm x 3mm	6500mm	183204			183205
ANGLE - 25mm x 20mm x 1.6mm	6500mm	181880	159899	181881	134490
ANGLE - 32mm x 20mm x 1.6mm	6500mm	181893	181894	181895	134521
ANGLE - 40mm x 12mm x 1.6mm	6500mm	181898	181900	181901	181899

CUSTOM POWDERCOAT COLOURS ALSO AVAILABLE ON MILL FINISH PRODUCTS, PLEASE SPEAK WITH YOUR ACCOUNT MANAGER

Angles (continued)

DESCRIPTION (A x B x C)	LENGTH	CLEAR ANODISE	P/COATED BLACK	P/COATED WHITE	MILL FINISH
ANGLE - 40mm x 20mm x 1.6mm	6500mm	181917	181918	181919	134522
ANGLE - 40mm x 20mm x 3mm	6500mm				181969
ANGLE - 40mm x 25mm x 1.6mm	6500mm	181924	181926	181927	181925
ANGLE - 40mm x 25mm x 3mm	6500mm	181975			181976
ANGLE - 50mm x 25mm x 1.6mm	6500mm	181935	181337	181361	134523
ANGLE - 50mm x 25mm x 3mm	6500mm	181981			181982
ANGLE - 70mm x 25mm x 1.6mm	6500mm	181956	181957	181958	134524
ANGLE - 80mm x 20mm x 3mm	6500mm				183212
ANGLE - 90mm x 40mm x 1.6mm	6500mm				187447
ANGLE - 100mm x 50mm x 3mm	6500mm				182012
ANGLE - 125mm x 50mm x 3mm	6500mm	182014			182015

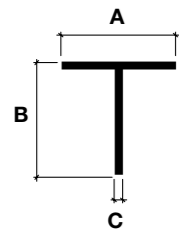


Channels

To satisfy a variety of architectural applications, Himmel's aluminium channels predominantly used in glazing applications, the most popular channels are 3mm thick in 25mm x25mm and 25mm x 40mm sizes. Himmel also offers a purpose made channel 32mm wide at the base.

DESCRIPTION (A x B x C)	LENGTH	CLEAR ANODISE	P/COATED BLACK	P/COATED WHITE	MILL FINISH
CHANNEL - 10mm x 10mm x 1.6mm	6500mm	181854			181855
CHANNEL - 12mm x 12mm x 1.6mm	6500mm	181862			179736
CHANNEL - 16mm x 16mm x 1.6mm	6500mm	181883	181885	181886	181884
CHANNEL - 20mm x 20mm x 1.6mm	3250mm	181910	181912	181913	181911
CHANNEL - 20mm x 20mm x 3mm	6500mm	181964			181965
CHANNEL - 25mm x 12mm x 3mm	3250mm	179715			181950
CHANNEL - 25mm x 25mm x 1.6mm	6500mm	181933	191996	191997	181934
CHANNEL - 25mm x 25mm x 3mm	3600mm	181977	181979	181980	181978
CHANNEL - 25mm x 40mm x 3mm	2800mm	182001	182003	182004	182002
CHANNEL - 32mm x 25mm x 3mm	6500mm	181983			181983
CHANNEL - 40mm x 40mm x 3mm	6500mm	182005			182006
CHANNEL - 50mm x 50mm x 3mm	6500mm	191995			182009
CHANNEL - 100mm x 50mm x 3mm	6500mm				182844

CUSTOM POWDERCOAT COLOURS ALSO AVAILABLE ON MILL FINISH PRODUCTS, PLEASE SPEAK WITH YOUR ACCOUNT MANAGER

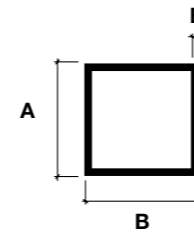


T Section

Himmel aluminium T sections are designed to guide sliding doors and rebate pairs of doors.

DESCRIPTION (A x B x C)	LENGTH	CLEAR ANODISE	MILL FINISH
T SECTION - 20mm x 20mm x 1.6mm	4000mm	181848	
T SECTION - 20mm x 20mm x 3mm	6500mm	181877	181878
T SECTION - 25mm x 25mm x 1.6mm	4000mm	181858	181859
T SECTION - 25mm x 25mm x 3mm	6500mm	181904	
T SECTION - 40mm x 40mm x 1.6mm	6500mm	181944	181945

CUSTOM POWDERCOAT COLOURS ALSO AVAILABLE ON MILL FINISH PRODUCTS, PLEASE SPEAK WITH YOUR ACCOUNT MANAGER



Box Section

Himmel aluminium box sections are used as a post for frame strengthening, especially where hanging a door is required.

DESCRIPTION (A x B x C)	LENGTH	CLEAR ANODISE	P/COATED BLACK	P/COATED WHITE	MILL FINISH
BOX SECTION - 45mm x 45mm	2800mm	103279	160221	181939	181938
BOX SECTION - 45mm x 45mm	6500mm	181993	188037	188038	181994
RECTANGLE - 50mm x 25mm x 2.5mm	6500mm				187572
RECTANGLE - 100mm x 25mm x 2.5mm	6500mm				187388

If you can't see what you want here, reach out to your Account Manager as we do have access to other profiles.

Door Hardware

Himmel premium door hardware provides that trusted finishing solution to any commercial fit-out.

With varying finishes and ergonomic shapes, supported by added security and performance, Himmel completes your partition offer.

From levers and locks to hinges and rollers, Himmel provides a contemporary solution for hinged and sliding doors.

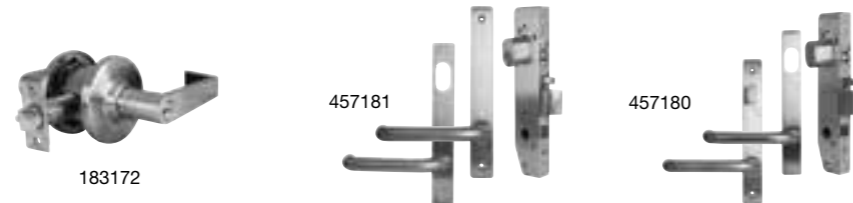
DOOR HANDLES



Code	Description	Brand	Model No	Finish
170450	LEVER SET PASSAGE ROUND ROSE FLAT HANDLE*	MADINOZ	ALSH02	SATIN CHROME PLATE
170448	LEVER SET PASSAGE ROUND ROSE FLAT HANDLE*	MADINOZ	MDZ888-12	MATTE BLACK
170449	LEVER SET PASSAGE ROUND ROSE TUBULAR HANDLE*	MADINOZ	MDZ888-18	SATIN CHROME PLATE
170447	LEVER SET PASSAGE ROUND ROSE TUBULAR HANDLE*	MADINOZ	MDZ888-18	MATTE BLACK
170473	PULL HANDLE SQUARE SERIES 25X25X600	VINCO	PH25600SD	MATTE BLACK
170472	PULL HANDLE SQUARE SERIES 25X25X600	VINCO	PR600CTC	STAINLESS STEEL
183247	PUSH PLATE CONSEALED FIX 300X100X2MM	VINCO	PPCF300	STAINLESS STEEL
183256	PULL HANDLE ON PLATE 300X100X2MM	VINCO	SDP200B/P	STAINLESS STEEL

Passage:outside and inside levers always free
* Fire rated & DDA AS1428.1 compliant

DOOR KITS



Code	Description	Brand	Model No	Finish	Door Thickness
457181	CLASSROOM SET 23MM BACK SET (2 HANDLES & MORTISE LOCK)	LOCKWOOD	3782KIT05	STAINLESS STEEL	35-50mm (metal) & 32-50mm (timber) hollow ali sections 38mm min depth
183172	CLASSROOM SET 70MM BACK SET* (2 HANDLES & TUBULAR LATCH)	BRAVA	EL6012SC70	SATIN CHROME	35-45mm
187960	STOREROOM SET 70MM BACK SET BRAVA* (2 HANDLES & TUBULAR LATCH)	BRAVA	EL6062SC70	SATIN CHROME	32-45mm
457180	ENTRANCE SET 23MM BACK SET (2 HANDLES & SLIMLINE MORTISE LOCK)	LOCKWOOD	3782KIT05	STAINLESS STEEL	35-50mm
187827	ENTRANCE SET 23MM BACK SET (2 HANDLES & SLIMLINE MORTISE LOCK)	DORMA	SB2212	STAINLESS STEEL	32-50mm- narrow stile hinged doors
182538	ENTRANCE SET 70MM BACK SET *	BRAVA	EL6000SC70	SATIN CHROME	35-45mm
457182	PASSAGE SET 23MM BACK SET	LOCKWOOD	3782KIT05	SATIN CHROME	35-50mm- narrow stile hinged doors
183173	PASSAGE SET 70MM BACK SET*	BRAVA	EL6082SC70	SATIN CHROME	35-45mm

Classroom:Operated by key or handle outside or by turnsnib, key or handle inside.
Storeroom:Outside lever always rigid, key retracts the latch.
Passage:outside and inside levers always free
Entrance: Involves keyway
* Fire rated & DDA AS1428.1 compliant

MORTISE LOCKS



Code	Description	Brand	Model No	Finish	Door Thickness
155890	MORTISE LOCK 60MM BACK SET*	KABA	MS222SS	STAINLESS STEEL	32-50mm
187503	MORTISE LOCK 60MM BACK SET*	LOCKWOOD	3572SC	SATIN CHROME	32-50mm
183120	MORTISE LOCK TAB PK2	-	-	SATIN CHROME	
191595	MORTISE LOCK FRONT PLATE	-	-	MATTE BLACK	

* Fire rated & DDA AS1428.1 compliant

HARDWARE ACCESSORIES



Code	Description	Brand	Model No	Finish
167790	CYLINDER OVAL	BRAVA	KA1	SATIN CHROME
187439	CYLINDER OVAL	BRAVA	KA1	MATTE BLACK
167931	CYLINDER OVAL	BRAVA	KD	SATIN CHROME
187435	CYLINDER OVAL	BRAVA	KD	MATTE BLACK
464912	ESCUTCHEON RD*	LOCKWOOD	VSR6	SATIN CHROME
170446	ESCUTCHEON RD*	MADINOZ	MDZ888OCBL	MATTE BLACK
167932	LATCH TUBULAR 60MM BACK SET	DORMA	A22202SSS	STAINLESS STEEL
467991	LATCH TUBULAR PASS 60MM BACK SET	LOCKWOOD	5260	MATTE BLACK
457212	ROLLER BOLT 50MM	NORMA	2520	NICKEL PLATE
155898	TURN SNIB RD SCREW MOUNT	KABA	FA272	SATIN CHROME
187746	CYLINDER ADAPTOR TURN	LOCKWOOD	SP3572-6250	SILVER

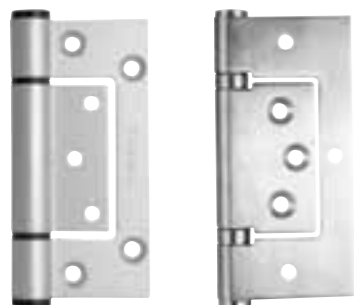
* Fire rated

DOOR STOPS AND ACOUSTIC DOOR SEALS



Code	Description	Brand	Model No	Finish
103323	DOOR STOP HALF MOON	VINCO	DS1001SC	SATIN CHROME
170411	DOOR STOP HALF MOON	VINCO	DS1001MB	MATTE BLACK
155908	DOOR STOP BULLET WITH MOUNT	VINCO	DS650SS	SATIN STAINLESS
193072	DOOR STOP HEAVY DUTY FLAT MOUNT	LOCKWOOD	A250	SATIN CHROME
458142	SEAL PERIMETER 6.5M LONG SINGLE	RAVEN	RP10SI	MATTE BLACK
187484	SEAL PERIMETER 6.5M LONG SINGLE	RAVEN	RP10SI	CLEAR ANODISED
458143	SEAL PERIMETER 7.5M LONG DOUBLE	RAVEN	RP10SI	MATTE BLACK
187628	SEAL PERIMETER 7.5M LONG DOUBLE	RAVEN	RP10SI	CLEAR ANODISED
183157	SEAL DROP 920MM	RAVEN	RP8SI	SILVER
187514	SEAL S/MOUNT 1070MM	LOCKWOOD	LAS80003SI	SILVER

HINGES

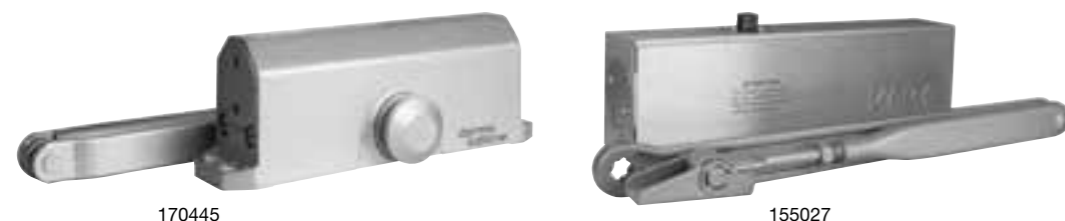


155914

187515

Code	Description	Brand	Model No	Finish	Door Type
155914	HINGE TAPERED ALI 100MM X 48MM X 3.2MM	VINCO	ZALH08TCAH	CLEAR ANODISED	Timber and aluminium frames/doors
160236	HINGE TAPERED ALI 100MM X 48MM X 3.2MM	VINCO	ZALH08TBLK	MATTE BLACK	Timber and aluminium frames/doors
180861	HINGE TAPERED ALI 100MM X 48MM X 3.2MM	VINCO	ZALH08TWHIT	WHITE	Timber and aluminium frames/doors
183153	HINGE Fast FIXED Heavy duty ALI 130MM X 50MM X 3MM AH130	LOCKWOOD	AH130CAN	CLEAR ANODISED	Aluminium entrance doors & centre or front glazing systems
183151	HINGE F/FIXED H/D ALI 130MM X 50MM X 3MM AH130	LOCKWOOD	AH130BLK	MATTE BLACK	Aluminium entrance doors & centre or front glazing systems
187515	HINGE N/MORTISE 102MM X 49MM X 2.5MM	VINCO	SSH100TAS-F	STAINLESS STEEL	Timber and aluminium frames/doors

DOOR CLOSERS



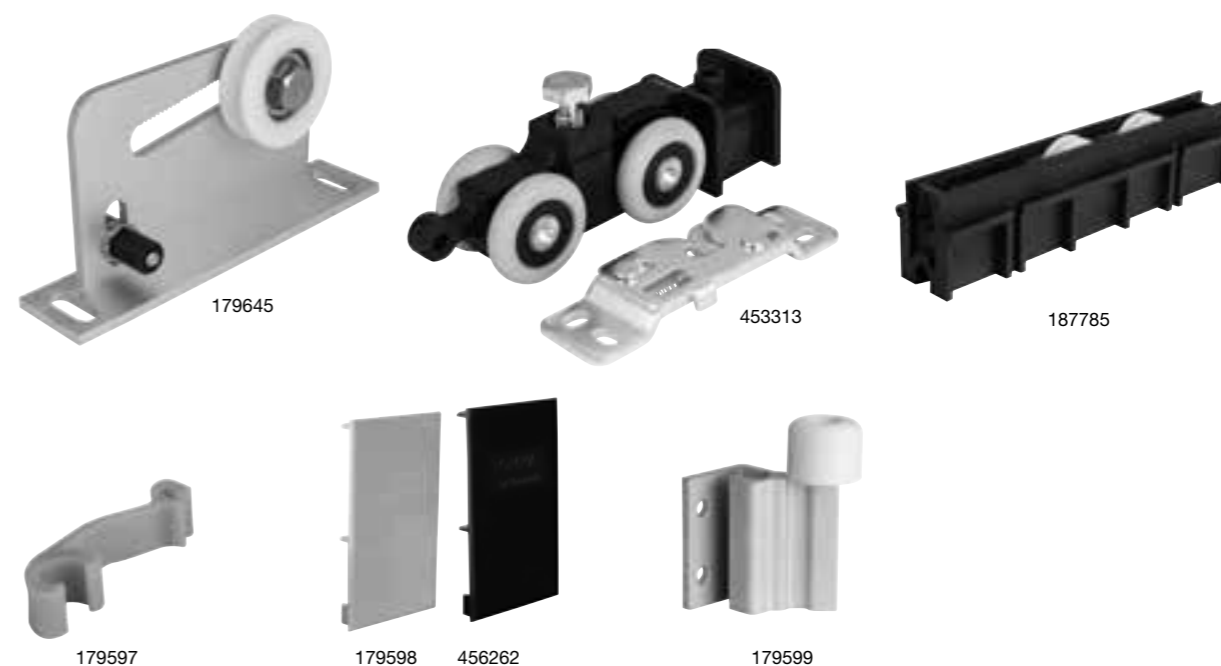
170445

155027

Code	Description	Brand	Model No	Finish	Max Door Weight(kg)
155027	DOOR CLOSER ADJUSTABLE SLIMLINE*	KABA	7303SIL	SILVER	80
469247	DOOR CLOSER ADJUSTABLE CONCEALED C/W TRACK ARM	KABA	DC8024BC	MATTE BLACK	25-85
170445	DOOR CLOSER BASIC ENTRY	DORMA	TS77 EN3	SILVER	60
170494	TRACK ARM ACCESSORY	KABA	A9001STSI	SILVER	N/R

* Fire rated

SLIDING DOOR ACCESSORIES



179645

453313

187785

179597

179598

456262

179599

Code	Description	Brand	Model No	Finish	Application
179645	ROLLER OVERHEAD PK2	Himmel	20-PA50100-NA	CLEAR ANODISED	Top Roller Wall Mount
179598	CAP PLASTIC GREY	Himmel	20-PA50ECG	GREY	
456262	CAP PLASTIC BLK	Himmel	20-PA50ECB	BLACK	
179597	JOINER PELMET PLASTIC	Himmel	20-PA50CLP	GREY	
179599	DOOR STOP T/TRACK SIL	Himmel	20-22-PA50100	CLEAR ANODISED	
453313	ROLLER KIT O/HEAD 200KG 200 SERIES	Himmel	20-200-KIT	SILVER	Top Roller
453314	ROLLER KIT S/CLOSE O/HD 120KG 200SERIES	Himmel	20-TSC120-SCFFFS	SILVER	
453315	ROLLER KIT S/CLOSE O/HD 160KG 200SERIES	Himmel	20-TSC160-SCFFFS	SILVER	
179600	ROLLER GUIDE SLIDING SRG	Himmel	FGL	MATTE BLACK	Bottom Roller
187785	ROLLER CARRIAGE ASSEMBLY DS45 PK2	Himmel	45-7044SNG	MATTE BLACK	

BARREL AND SLIDING BOLTS



183177

Code	Description	Finish
187585	BARREL BOLT STRAIGHT 32 X 150MM	SATIN CHROME
170454	BARREL BOLT STRAIGHT 32 X 300MM	SATIN CHROME
170456	BARREL BOLT STRAIGHT 32 X 600MM	SATIN CHROME
183177	FLUSH BOLT AL/DOOR 300MM	SATIN CHROME
183175	FLUSH BOLT AL/DOOR 300MM	MATTE BLACK
183178	FLUSH BOLT AL/DOOR 600MM	SATIN CHROME
451340	FLUSH BOLT AL/DOOR 600MM	MATTE BLACK
170486	FLUSH BOLT FERRULE A/DOOR	STAINLESS STEEL

OTHER ACCESSORIES



Code	Description	Finish	Application
155049	SCREW P/HEAD 12MM X 6G A126GP PK100	ZINC PLATED	For screw fixing skirting
183123	SCREW P/HEAD 12MM X 6G A126GP BOX 1000	ZINC PLATED	For screw fixing skirting
155047	SCREW P/HEAD 19MM X 6G A126GP PK100	ZINC PLATED	For CS45 staking angle
183138	SCREW P/HEAD 19MM X 6G A126GP BOX1000	ZINC PLATED	For CS45 staking angle
183133	SCREW HINGE LONG U/CUT 40MM X 8G 158GUCZP PK100	ZINC PLATED	For screwing hinges into MDF stop ends
155045	SCREW S/HINGE 12MM X 8G PK100	ZINC PLATED	For screwing hinges into aluminium section
178113	SPIGGOT SET 4 DS45	MILLED FINISH	Connects bottom rail to side rail



187770

Code	Description	Brand	Finish	Application
187770	SEALANT GLAZING 300GM	FULLER	TRANSLUCENT	Industrial glazing and fabrication
187476	SEALANT GLAZING 300GM	FULLER	BLACK	Industrial glazing and fabrication
183197	SEALANT TOOLBOX MS POLYMER 400G	FULLER	TRANSLUCENT	Bonding aluminium skirting and profiles
183198	SEALANT TOOLBOX MS POLYMER 400G	FULLER	WHITE	Bonding aluminium skirting and profiles
183195	SEALANT TOOL BOX POLYMER 400G	FULLER	BLACK	Bonding aluminium skirting and profiles



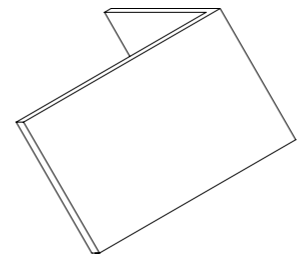
170661

Code	Description	Finish	Application
170661	MOHAIR 007MHLMB	BLACK	AS104, AS132, CS45 door stop
187312	MOHAIR 007MHLMG	GREY	AS104, AS132, CS45 door stop
155006	MOHAIR NYLON/BK 13MM NBHLMB	BLACK	DS45 lock still upright
155009	MOHAIR NYLON/BK 13MM NBHLMG	GREY	DS45 lock still upright

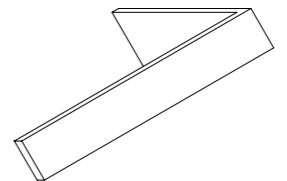


187816

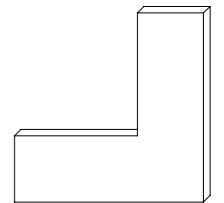
Code	Description	Finish	Application
187816	WEDGE GLAZING 6MM BLK	BLACK	Dry glazing of glass partitioning
187315	WEDGE GLAZING 10MM BLK	BLACK	Dry glazing of glass partitioning
187793	WEDGE GLAZING 12MM BLK	BLACK	Dry glazing of glass partitioning
155009	MOHAIR NYLON/BK 13MM NBHLMG	GREY	DS45 lock still upright



HAS STAKE 1
103322



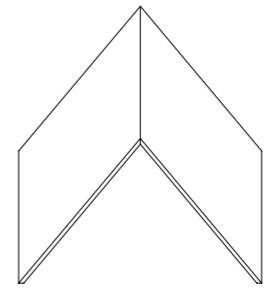
HAS STAKE 3
103321



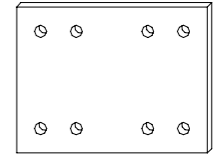
HAS STAKE 6
450932



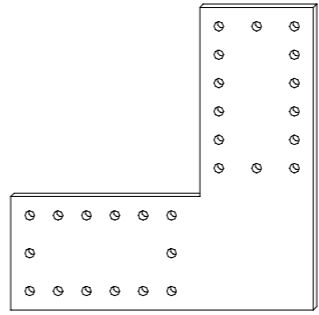
HAS STAKE 7
450933



HAS STAKE 8
450934



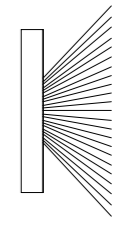
HAS STAKE 9
456993



HAS STAKE 10
456994



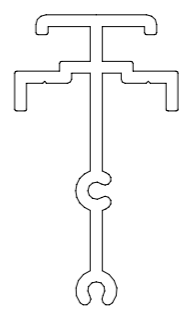
HAS ACE CAPTIVE WEDGE
457855



HAS JAMBSEAL INFILL/ MOHAIR
170661
187312



PASACC 009
BLACK/GREY SKIRTING INFILL
103248
103249



HAS GLAZING POST SPIGOT
451912
451911



Solid MDF Doors

Himmel provides a door solution for all your internal fit-outs with a solid core MDF, hard wearing range. Himmel's oversize door blank allows for the convenience of custom cutting on site to the required door height and width. Himmel also offers fabricated mortising upon request.

With a range of hinged and sliding door hardware complementing our contemporary aluminium partitioning suites, Himmel provides the ultimate door safety, security and performance solution. Himmel MDF solid core doors are also AS1428.1 compliant, meeting the design requirements for new building work where access for people with disabilities is required.

Code	Description
155771	MDF SOLID DOOR BLANK 2700 x 925 x 32mm
187729	MDF SOLID DOOR BLANK 2700 x 925 x 35mm
187772	MDF SOLID DOOR BLANK 2700 x 925 x 39mm
187787	MDF SOLID DOOR BLANK 2700 x 925 x 44mm

MDF DOOR MORTISED

Code	Description
155772	MDF DOOR MORTICED 2700X925X32MM
471753	MDF DOOR MORTICED 2700X925X35MM
187648	MDF DOOR MORTICED 2700X925X39MM
187756	MDF DOOR MORTICED 2700X925X44MM



HIMMEL™

INTERIOR SYSTEMS

1300 374 253 | WWW.HIMMEL.COM.AU

